

## Product datasheet for **AM05324PU-N**

### SMC2 Mouse Monoclonal Antibody [Clone ID: E1M]

#### Product data:

Product Type:	Primary Antibodies
Clone Name:	E1M
Applications:	WB
Recommended Dilution:	<b>Western Blot:</b> 1-5 µg/ml. <i>Positive Control/Tissue Expression:</i> HeLa cells.
Reactivity:	Human
Host:	Mouse
Isotype:	IgG
Clonality:	Monoclonal
Immunogen:	Hybridoma produced by the fusion of splenocytes from mice immunized with recombinant protein corresponding to amino acids 523-768 of Human CAP-E and Mouse myeloma cells.
Specificity:	Recognizes SMC2/CAPE.
Formulation:	PBS containing 0.08% Sodium Azide as preservative. State: Purified State: Liquid purified IgG fraction.
Concentration:	lot specific
Conjugation:	Unconjugated
Storage:	The antibody can be shipped at ambient temperature. Store (in aliquots) at -20°C.
Stability:	Shelf life: one year from despatch.
Gene Name:	structural maintenance of chromosomes 2
Database Link:	<a href="#">Entrez Gene 10592 Human O95347</a>



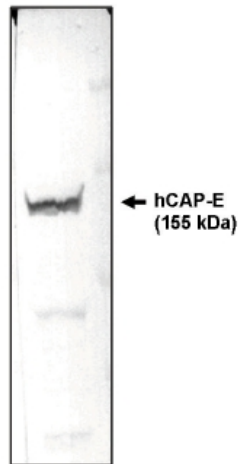
[View online »](#)

**Background:**

CAP-E and CAP-C (Chromosome Associated Protein-E & C) are also SMC (Structural Maintenance of Chromosome) family members that form a heterodimeric complex required for mitotic chromosome condensation to achieve proper segregation of genetic information during subsequent cell division. hCAP-C/hCAP-E is a component of a multiprotein complex called condensin that interacts with phosphorylation of Histone H3 resulting in the mitotic chromosome condensation. The distribution patterns of the two heterodimeric complexes in interphase nucleus indicate independent behaviour of the two complexes during cell cycle. These results suggest that the two distinct complexes are involved in different aspects of mitotic chromosome organization in human cells.

**Synonyms:**

SMC protein 2, SMC-2, SMC2L1, CAP-E, Chromosome-associated protein E, XCAP-E homolog

**Product images:**

Western blot analysis: CAPE antibody staining of HeLa cell lysate.