

## Product datasheet for **AM05290PU-N**

### RIT1 Mouse Monoclonal Antibody [Clone ID: 14G7]

#### Product data:

Product Type:	Primary Antibodies
Clone Name:	14G7
Applications:	WB
Recommended Dilution:	Western Blot (0.5-1 µg/ml).
Reactivity:	Human, Mouse
Host:	Mouse
Isotype:	IgG1
Clonality:	Monoclonal
Immunogen:	Hybridoma produced by the fusion of splenocytes from mice immunized with recombinant full-length human Rit protein and mouse myeloma cells.
Specificity:	This antibody detects recombinant Rit protein expressed in 293 cells. Does not cross-react with Rin protein.
Formulation:	20 mM Sodium phosphate, 150 mM Sodium Chloride, 50% Glycerol at pH 7.5 and 3 mM Sodium Azide as preservative. State: Purified State: Liquid (sterile filtered) purified IgG fraction.
Concentration:	lot specific
Conjugation:	Unconjugated
Storage:	Store the antibody at -20°C. Avoid repeated freezing and thawing.
Stability:	Shelf life: One year from despatch.
Gene Name:	Ras like without CAAX 1
Database Link:	<a href="#">Entrez Gene 6016 Human Q92963</a>



[View online »](#)

**Background:**

Rit and its neuron-specific homologue, Rin, define a recently discovered subfamily of Ras-related GTPases. Rit and Rin are membrane-associated in spite of the fact that they lack a CAAX box or similar C-terminal lipidation motif. Rit and Rin display 64% amino acid sequence identity and share a unique nine amino acid effector domain (DPTIEDAYK) that is 100% conserved between the murine and human proteins. Although the effector domain sequences of Rit and Rin are very similar to that of Ras, Rit and Rin have been shown to interact with the known Ras-binding proteins RalGDS, Rlf and AF-6, but not the Raf kinases, RIN1 or the p110 subunit of PI3 kinase. For this reason, it has been suggested that Rit and Rin may play important roles in the regulation of signaling pathways distinct from those controlled by Ras.

**Synonyms:**

RIBB, RIT, ROC1

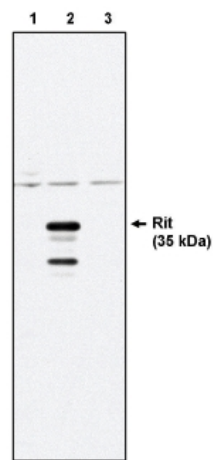
**Product images:**

Figure 1. Western blot analysis using Rit antibody on control 293 cells (Lane 1), 293 cells expressing HA-tagged Rit protein (Lane 2) and 293 cells expressing HA-tagged Rin protein (Lane 3).