

## Product datasheet for **AM05288PU-N**

### 6xHistidine Epitope Tag (HHHHHH) Mouse Monoclonal Antibody [Clone ID: IPA2C5.1]

#### Product data:

Product Type:	Primary Antibodies
Clone Name:	IPA2C5.1
Applications:	WB
Recommended Dilution:	Western Blot.
Host:	Mouse
Isotype:	IgG2a
Clonality:	Monoclonal
Immunogen:	Hybridoma produced by the fusion of splenocytes from mice immunized with His-His-His-His-His-His synthetic peptide and mouse myeloma cells.
Specificity:	This antibody is effective in detecting proteins expressed using the following vector systems, pET 28, 30 and 32 as well as Invitrogen's pLZ. Specific for 6x-His tags only and for His tags no longer than 6 histidines.
Formulation:	PBS containing 0.08% Sodium Azide as preservative. State: Purified State: Liquid (sterile filtered) purified IgG fraction.
Concentration:	lot specific
Conjugation:	Unconjugated
Storage:	Store the antibody at -20°C. Avoid repeated freezing and thawing.
Stability:	Shelf life: One year from despatch.



**Background:**

6x-His tags are a type of tag for expressed proteins. This tag is made up of 6 histidine residues attached to either the N- or C-terminal of a protein. Proteins expressed with this type of tag are then traditionally purified using a divalent metal ion column. However, using an antibody specific to this 6x-His tag, the protein can be analyzed for by Western blot or immunofluorescence techniques, thus eliminating the need for a protein-specific antibody. 6x-His tags are particularly effective for the purification of protein expressed in E. coli systems.

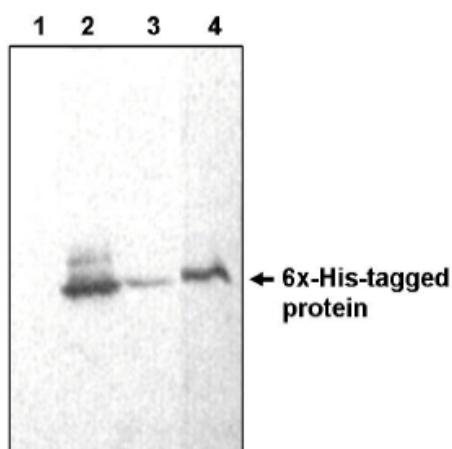
**Product images:**

Figure 1. Western blot of His tagged protein (vector pET 30C) using AM05288PU-N antibody. Lane 1: Whole cellular extract of BL21 (DE3) pJT4pTT9 bacteria carrying gene encoding for His-Rel E protein (uninduced). Lane 2: Induced. Lane 3: Induced (1/2 dilution).