

Product datasheet for **AM05285PU-N**

Caspase 8 (CASP8) Mouse Monoclonal Antibody [Clone ID: FLICE 1 1-37]

Product data:

Product Type:	Primary Antibodies
Clone Name:	FLICE 1 1-37
Applications:	WB
Recommended Dilution:	Western Blot. Positive Control: MCF-7 cell lysates.
Reactivity:	Human
Host:	Mouse
Isotype:	IgG
Clonality:	Monoclonal
Immunogen:	Hybridoma produced by the fusion of splenocytes from mice immunized with recombinant human caspase-8 protein and mouse myeloma cells.
Specificity:	This antibody detects proenzyme form of human Caspase-8 by Western blot analysis as well as one of the cleavage products.
Formulation:	PBS containing 0.08% Sodium Azide as preservative. State: Purified State: Liquid (sterile filtered) purified IgG fraction.
Concentration:	lot specific
Conjugation:	Unconjugated
Storage:	Store the antibody at -20°C. Avoid repeated freezing and thawing.
Stability:	Shelf life: One year from despatch.
Gene Name:	caspase 8
Database Link:	Entrez Gene 841 Human Q14790



[View online »](#)

Background:

Caspases are key effectors of programmed cell death. They are synthesized as inactive proenzymes which are activated by cleavage at a specific aspartate residue to form two subunits. These subunits are normally linked together by a linker which may be involved in the regulation of the different caspases. Caspase-8 is a key enzyme in the apoptosis pathway. Caspase-8 contains two N-terminal region death effector domains which are removed to activate the enzyme along with cleavage into the two subunits. These subunits then form the active protease which is capable of cleaving caspase-3, -6 and -7. These caspases are then capable of cleaving other cellular substrates such as PARP and DFF, which in turn induce apoptosis.

Synonyms:

CASP-8, CASP8, MCH5, CAP4

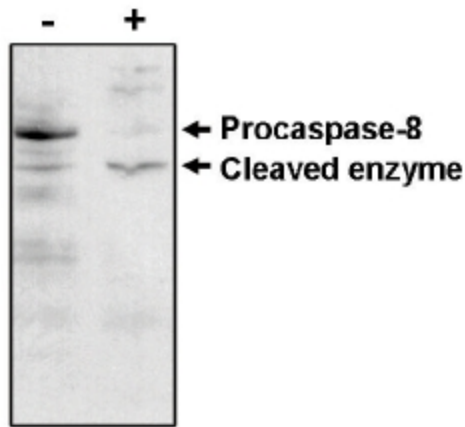
Product images:

Figure 1. Western blot analysis using caspase-8 antibody on MCF-7 cells negative (-) and positive (+) for caspase-3 after treatment for 48 hours with thapsigargin. Antibody detects procaspase and one cleavage product