

Product datasheet for **AM05275PU-N**

LEF1 (alternate exon) Mouse Monoclonal Antibody [Clone ID: 1C3]

Product data:

Product Type:	Primary Antibodies
Clone Name:	1C3
Applications:	WB
Recommended Dilution:	Western Blot: Detect LEF-1 protein containing the alternately spliced exon between amino acids 212-241 at 1-5 µg/ml. Positive Control: Cos cells transfected with LEF-1 protein.
Reactivity:	Human
Host:	Mouse
Isotype:	IgG1
Clonality:	Monoclonal
Immunogen:	Recombinant full-length LEF-1 protein.
Specificity:	This antibody recognizes an epitope in amino acids 227-231 of LEF-1. This sequence lies within the context dependent activation domain of LEF-1 and appears to be an alternate splice variant exon of the LEF-1 gene.
Formulation:	PBS containing 0.08% Sodium Azide as preservative. State: Purified State: Liquid (sterile filtered) purified IgG fraction.
Concentration:	lot specific
Conjugation:	Unconjugated
Storage:	Store the antibody at -20°C. Avoid repeated freezing and thawing.
Stability:	Shelf life: One year from despatch.
Gene Name:	lymphoid enhancer binding factor 1
Database Link:	Entrez Gene 51176 Human Q9UJU2



[View online »](#)

Background:

Lymphoid Enhancer Factor-1 (LEF-1) is an HMG 1/2-like DNA binding/bending protein and is a member of the LEF/TCF transcription factor family. There are four LEF/TCF family members in mammalian systems (LEF-1, TCF-1, TCF-3 and TCF-4), and orthologs to these factors have been identified in many different species. LEF/TCFs are downstream mediators of Wnt/Wingless signals. Wnt signaling drives cell polarity, cell fate and cell growth decisions in embryonic tissues and in post-natal tissues that continue to develop from mitotically active stem cell precursors. Misregulation of Wnt signaling is also implicated as a root cause of many different cancers, such as colon cancer, melanoma, breast cancer, prostate cancer and others.

Synonyms:

Lymphoid enhancer-binding factor 1, LEF-1, T cell-specific transcription factor 1-alpha, TCF1-alpha

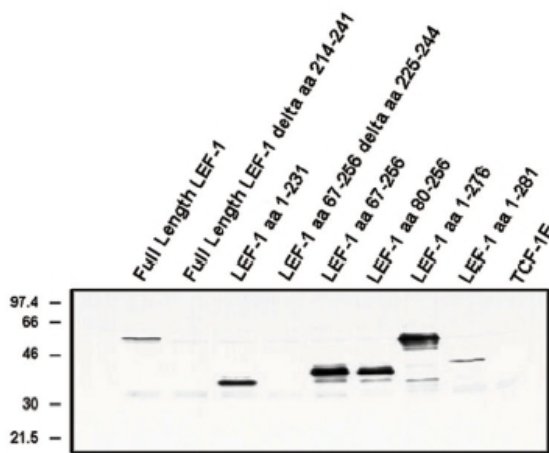
Product images:


Figure 1. Western blot analysis using LEF-1 (alternate exon) antibody on Cos cells transfected with the indicated proteins.