

## Product datasheet for **AM05261PU-L**

### LEF1 (HMG Binding Domain) Mouse Monoclonal Antibody [Clone ID: REMB6]

#### Product data:

Product Type:	Primary Antibodies
Clone Name:	REMB6
Applications:	IF, WB
Recommended Dilution:	<b>Western Blot:</b> 1-5 µg/ml <b>Immunofluorescence on Paraformaldehyde-Fixed Cells:</b> 1 µg/ml or 1/1000. <b>Positive Control:</b> Jurkat cell lysate.
Reactivity:	Human, Mouse
Host:	Mouse
Isotype:	IgG1
Clonality:	Monoclonal
Immunogen:	Full-length recombinant LEF-1 protein.
Specificity:	REMB6 recognizes the High Mobility Group DNA domain of LEF-1.
Formulation:	PBS State: Purified State: Liquid purified IgG fraction Preservative: 0.08% Sodium Azide
Concentration:	lot specific
Purification:	Protein A/G Chromatography
Conjugation:	Unconjugated
Storage:	Upon receipt, store undiluted (in aliquots) at -20°C. Avoid repeated freezing and thawing.
Stability:	Shelf life: one year from despatch.
Gene Name:	lymphoid enhancer binding factor 1
Database Link:	<a href="#">Entrez Gene 51176 Human Q9UJU2</a>



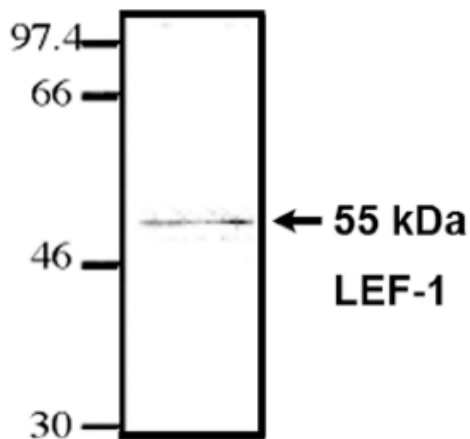
[View online »](#)

**Background:**

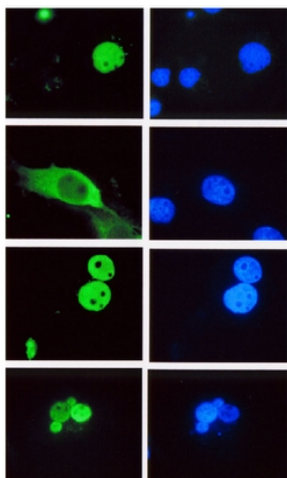
Lymphoid Enhancer Factor-1 is a transcription factor of the High Mobility Group of DNA binding proteins. It is one member of a family of four proteins referred to as LEF/TCF transcription factors (LEF-1, TCF-1, TCF-3 and TCF-4). These factors play a crucial role in WNT/Wingless signaling, a signal transduction cascade that directs cell differentiation. Aberrant activation of the WNT/Wingless pathway is also a root cause in the genesis of certain cancers such as colon cancer, melanoma and breast cancer. LEF-1 is expressed during development in many different differentiating tissues, and in a few tissues after birth. LEF-1 expression is required for proper development of breast, teeth, hair, whiskers and the trigeminal nerve. It is redundant with TCF-1 (for T Cell Factor-1) for correct development of T lymphocytes in the thymus. LEF-1 is a 399 amino acid protein that appears as a cluster of polypeptides ranging in size between 55-57 kD on SDS-PAGE analysis. Alternative splice forms of LEF-1 and other LEF/TCF family members have been identified, but the expression pattern and relative abundance of these alternative forms have not been well studied. They can appear on westerns as smaller immunoreactive forms.

**Synonyms:**

Lymphoid enhancer-binding factor 1, LEF-1, T cell-specific transcription factor 1-alpha, TCF1-alpha

**Product images:**

Western blot analysis using LEF-1/TCF antibody on Jurkat cell lysate at 5 ug/ml.



Immunofluorescence staining of Cos-1 cells transfected with (from Top Down) LEF-1, LEF-1 mutant missing nuclear localization signal, TCF-4 and TCF-1. Left column shows -N HMG/TCF antibody, (Clone REMB6) visualized with FITC anti-Mouse. Right column is DAPI staining to detect all nuclei.