

Product datasheet for **AM05251PU-N**

Rb2 p130 (RBL2) Mouse Monoclonal Antibody [Clone ID: KAB40]

Product data:

Product Type:	Primary Antibodies
Clone Name:	KAB40
Applications:	WB
Recommended Dilution:	Suitable for Western Blots at 1/1000.
Reactivity:	Human, Mouse, Rat
Host:	Mouse
Isotype:	IgG1
Clonality:	Monoclonal
Immunogen:	GST fusion protein to the N terminus of p130.
Specificity:	This antibody recognizes both the phosphorylated and unphosphorylated forms of p130 at a MW of 130 kDa.
Formulation:	PBS containing 0.08% Sodium Azide as preservative. State: Purified State: Liquid (sterile filtered) purified IgG fraction.
Concentration:	lot specific
Purification:	Protein A/G chromatography.
Conjugation:	Unconjugated
Storage:	Store the antibody at -20°C. Avoid repeated freezing and thawing.
Stability:	Shelf life: One year from despatch
Gene Name:	RB transcriptional corepressor like 2
Database Link:	Entrez Gene 5934 Human Q08999



[View online »](#)

Background:

P130 is related both in structure and function to the retinoblastoma tumor suppressor protein and p107 (collectively known as pocket proteins) and are known to regulate the activity of E2F transcription factors. E2F transcription factors regulate the expression of a number of genes important in cell proliferation, particularly those involved in the progression through G1 and into the S-phase of the cell cycle. Binding of p130 converts E2F transcription factors from transcriptional activators to transcriptional repressors.

Synonyms:

Retinoblastoma-like protein 2, RB2, 130 kDa retinoblastoma-associated protein, p130, Retinoblastoma-related protein 2, RBR-2, pRb2

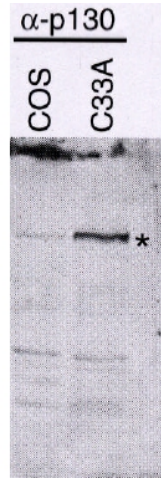
Product images:

Figure 1. Western Blot analysis of antibody.