

Product datasheet for **AM03216PU-N**

Porcine IgM Mouse Monoclonal Antibody [Clone ID: 206-2]

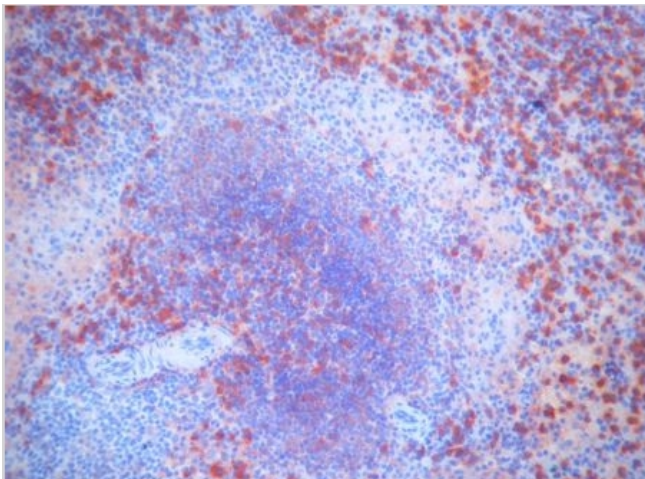
Product data:

Product Type:	Secondary Antibodies
Product Name:	Porcine IgM Mouse Monoclonal Antibody [Clone ID: 206-2]
Clone Name:	206-2
Applications:	ELISA, IHC, IP
Recommended Dilution:	ELISA: 0.1 µg/ml (1/4000). Immunoprecipitation. Immunohistochemistry on Frozen Sections: 0.2 µg/ml (1/2000). Immunohistochemistry on Paraffin Sections (Does not react on routinely processed Paraffin Section). Does not react in Western Blot with reduced and denatured samples.
Reactivity:	Porcine
Host:	Mouse
Immunogen:	Porcine IgM.
Isotype:	IgG2b
Formulation:	PBS, pH 7.2 containing 5 mg/ml BSA as a stabilizer and 0.09% Sodium Azide as preservative State: Aff - Purified State: Lyophilized purified IgG fraction
Reconstitution Method:	Restore with 0.5 ml distilled water to make stock solution.
Concentration:	0.4 mg/ml IgG (after reconstitution)
Purification:	Affinity Chromatography
Conjugation:	Unconjugated
Storage:	Store lyophilized at 2-8°C for 6 months or at -20°C long term. After reconstitution store the antibody undiluted at 2-8°C for one month or (in aliquots) at -20°C long term. Avoid repeated freezing and thawing.



[View online »](#)

Product images:



Immunohistochemical staining of Swine Spleen Frozen Section using Clone 206-2 AM03216PU-N antibody.