

Product datasheet for **AM03203PU-S**

PDPN (1-206) Mouse Monoclonal Antibody [Clone ID: 5E2]

Product data:

Product Type:	Primary Antibodies
Clone Name:	5E2
Applications:	ELISA, FC, IF, IHC, WB
Recommended Dilution:	ELISA. Flow Cytometry. Immunofluorescence/Immunocytochemistry. Immunohistochemistry on Paraffin Sections: 5 µg/ml after heat induced antigen retrieval in pH 6.0 citrate buffer.
Reactivity:	Human, Mouse
Host:	Mouse
Isotype:	IgG2b
Clonality:	Monoclonal
Immunogen:	Recombinant Human Podoplanin/PDPN (1-206 aa) purified from <i>E. coli</i>
Specificity:	This antibody detects Podoplanin.
Formulation:	PBS, pH 7.4 containing 0.02% Sodium Azide and 10% Glycerol State: Purified State: Liquid purified IgG fraction
Concentration:	lot specific
Purification:	Affinity Chromatography on Protein G
Conjugation:	Unconjugated
Storage:	Store undiluted at 2-8°C for up to two weeks or (in aliquots) at -20°C for longer. Avoid repeated freezing and thawing.
Stability:	Shelf life: one year from despatch.
Gene Name:	podoplanin
Database Link:	Entrez Gene 10630 Human Q86YL7



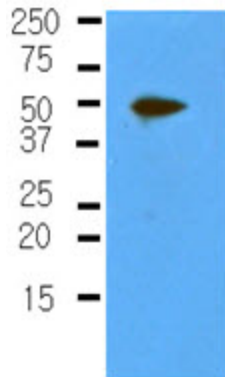
[View online »](#)

Background: Podoplanin (PDPN) is a small mucin-like transmembrane protein, widely expressed in various specialized cell types throughout the body. This is a type-I integral membrane glycoprotein with diverse distribution in human tissues. The physiological function of this protein may be related to its mucin-type character.

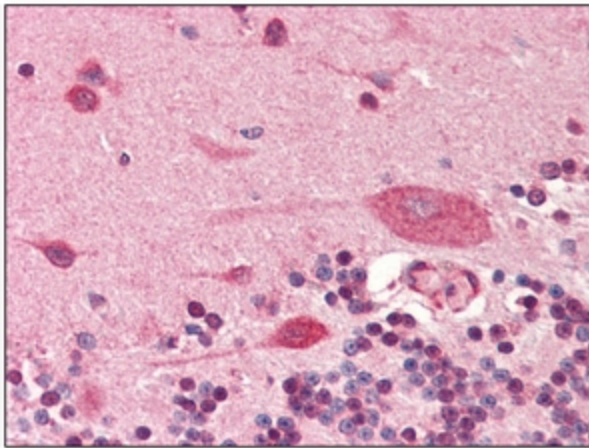
Synonyms: Glycoprotein 36, PA2.26 antigen, T1-alpha, Aggrus, PDPN, GP36, PSEC0003, PSEC0025

Product images:

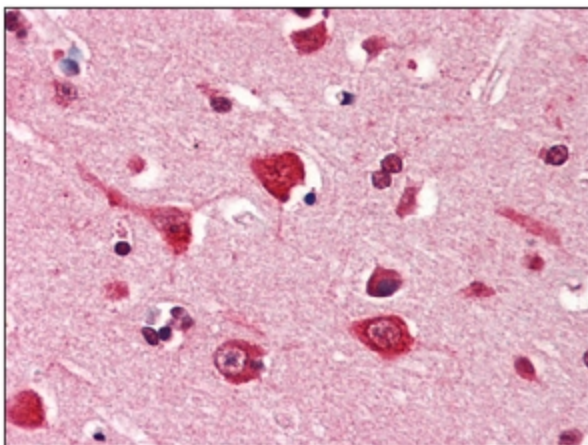
Mouse kidney



Western blot analysis: Extracts of mouse kidney (50 ug) were resolved by SDS-PAGE, transferred to NC membrane and probed with anti-Human Podoplanin antibody (1/500). Proteins were visualized using a goat anti-mouse secondary antibody conjugated to HRP and an ECL detection system.



Immunohistochemistry: -N Podoplanin antibody staining of Formalin-Fixed, Paraffin-Embedded Human Brain, Cerebellum at 5 ug/ml followed by biotinylated anti-mouse IgG secondary antibody, alkaline phosphatase-streptavidin and chromogen.



Immunohistochemistry: -N Podoplanin antibody staining of Formalin-Fixed, Paraffin-Embedded Human Brain, Cortex at 5 ug/ml followed by biotinylated anti-mouse IgG secondary antibody, alkaline phosphatase-streptavidin and chromogen.