

Product datasheet for **AM03186PU-S**

CALM1 Mouse Monoclonal Antibody [Clone ID: J4D8]

Product data:

Product Type:	Primary Antibodies
Clone Name:	J4D8
Applications:	ELISA, IF, IHC, WB
Recommended Dilution:	ELISA. Western blot: 1/500-1/1,000 (1/500 as starting dilution). Immunofluorescence/Immunocytochemistry analysis of PNMT in Hep3B cells. The cell was stained with AM03186PU (1/100). The secondary antibody (green) was used Alexa Fluor 488. DAPI was stained the cell nucleus (blue).
Reactivity:	Human
Host:	Mouse
Isotype:	IgG2a
Clonality:	Monoclonal
Immunogen:	Recombinant Human Calmodulin (1-149aa) purified from <i>E. coli</i>
Specificity:	This antibody detects Calmodulin.
Formulation:	PBS, pH 7.4 containing 0.02% Sodium Azide and 10% Glycerol State: Aff - Purified State: Liquid purified Ig fraction
Concentration:	lot specific
Purification:	Affinity Chromatography on Protein G
Conjugation:	Unconjugated
Storage:	Store undiluted at 2-8°C for up to two weeks or (in aliquots) at -20°C for longer. Avoid repeated freezing and thawing.
Stability:	Shelf life: one year from despatch.
Gene Name:	calmodulin 1 (phosphorylase kinase, delta)
Database Link:	Entrez Gene 801 Human P0DP23



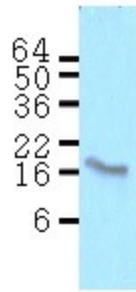
[View online »](#)

Background: Calmodulin has been known to act as an intracellular calcium sensor protein. When the intracellular Ca^{2+} concentration increases, calmodulin can bind up to four Ca^{2+} , changing its conformation and regulating cellular functions such as activation or inhibition of a large number of enzymes, ion channels, and receptors.

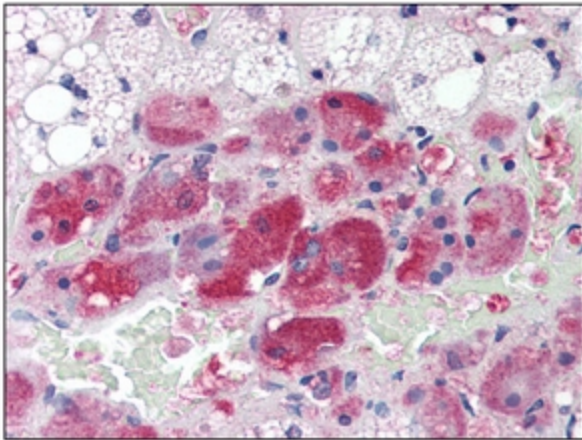
Synonyms: CALM1, CALM, CAM, CAM1

Product images:

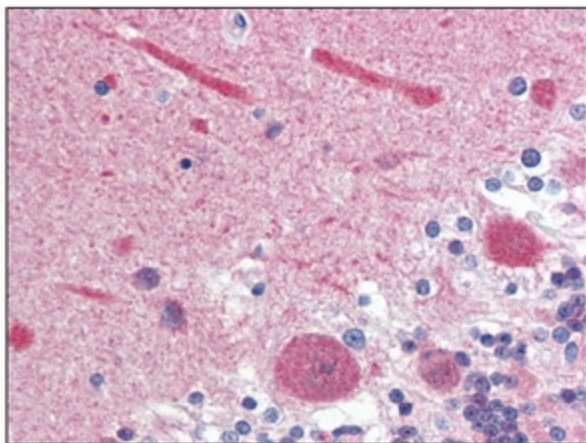
NIH 3T3



Western blot analysis: Cell lysates of NIH3T3 (50 ug) were resolved by SDS-PAGE, transferred to NC membrane and probed with anti-Human Calmodulin Antibody (1/500). Proteins were visualized using a Goat anti-Mouse secondary antibody conjugated to HRP and an ECL detection system.



Immunohistochemistry: -N Calmodulin antibody staining of Formalin-Fixed, Paraffin-Embedded Human Adrenal at 10 ug/ml after heat-induced antigen retrieval.



Immunohistochemistry: -N Calmodulin antibody staining of Formalin-Fixed, Paraffin-Embedded Human Brain, Cerebellum at 10 ug/ml after heat-induced antigen retrieval.