

## Product datasheet for **AM03185PU-N**

### PPP1R14A Mouse Monoclonal Antibody [Clone ID: 4H10]

#### Product data:

Product Type:	Primary Antibodies
Clone Name:	4H10
Applications:	ELISA, WB
Recommended Dilution:	ELISA. Western blot: 1:250 ~ 1:1000 (1:500 as startin dilution).
Reactivity:	Human
Host:	Mouse
Isotype:	IgG2a
Clonality:	Monoclonal
Immunogen:	Recombinant human PPP1R14A (1-147aa) purified from E. coli
Specificity:	This antibody detects PPP1R14A.
Formulation:	PBS, pH 7.4 containing 0.02% Sodium Azide and 10% Glycerol State: Aff - Purified State: Liquid Ig fraction
Concentration:	lot specific
Purification:	Protein-G affinity chromatography
Conjugation:	Unconjugated
Storage:	Store undiluted at 2-8°C for up to two weeks or (in aliquots) at -20°C for longer. Avoid repeated freezing and thawing.
Stability:	Shelf life: one year from despatch.
Gene Name:	protein phosphatase 1 regulatory inhibitor subunit 14A
Database Link:	<a href="#">Entrez Gene 94274 Human</a> <a href="#">Q96A00</a>



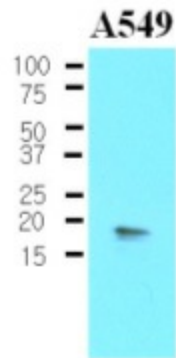
[View online »](#)

**Background:**

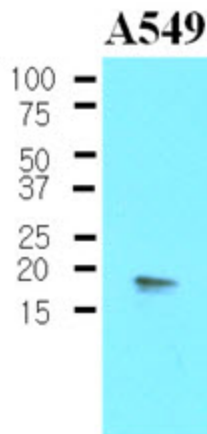
PPP1R14A (Protein phosphatase 1 regulatory subunit 14A) is a phosphorylation-dependent inhibitory protein for smooth muscle myosin phosphatase. Myosin phosphatase can reverse MYL (myosin light chain) phosphorylation to induce a state of relaxation. However, during agonist-induced contraction at constant Ca<sup>2+</sup> concurrent inhibition of myosin phosphatase leads to increases in MYL phosphorylation and tension. These calcium-independent increases in myosin phosphorylation and tension are termed calcium sensitization.

**Synonyms:**

Protein phosphatase 1 regulatory subunit 14A, CPI-17, CPI17, PPP1INL

**Product images:**

The Cell lysates of A549 (30ug) were resolved by SDS-PAGE, transferred to NC membrane and probed with anti-human PPP1R14A (1:500). Proteins were visualized using a goat anti-mouse secondary antibody conjugated to HRP and an ECL detection system.



Western blot analysis The Cell lysates of A549 (30 ug) were resolved by SDS-PAGE, transferred to NC membrane and probed with anti-human PPP1R14A (1:500). Proteins were visualized using a goat anti-mouse secondary antibody conjugated to HRP and an ECL detection system.