

Product datasheet for **AM03179PU-S**

Hsp105 (HSPH1) (Isoform alpha) Mouse Monoclonal Antibody [Clone ID: J1G12]

Product data:

| | |
|-----------------------|--|
| Product Type: | Primary Antibodies |
| Clone Name: | J1G12 |
| Applications: | ELISA, WB |
| Recommended Dilution: | ELISA. Western blot: 1:500 ~ 1,000 (starting dilution 1:1000). |
| Reactivity: | Human |
| Host: | Mouse |
| Isotype: | IgG2b |
| Clonality: | Monoclonal |
| Immunogen: | Recombinant human HSP105 α (1-858 aa) purified from <i>E. coli</i> |
| Specificity: | This antibody detects Heat Shock Protein 105 alpha (HSP105a). |
| Formulation: | PBS, pH 7.4 containing 0.02% Sodium Azide and 10% Glycerol State: Purified State: Liquid purified Ig fraction |
| Concentration: | lot specific |
| Purification: | Protein-G affinity chromatography |
| Conjugation: | Unconjugated |
| Storage: | Store undiluted at 2-8°C for up to two weeks or (in aliquots) at -20°C for longer. Avoid repeated freezing and thawing. |
| Stability: | Shelf life: one year from despatch. |
| Gene Name: | heat shock protein family H (Hsp110) member 1 |
| Database Link: | Entrez Gene 10808 Human Q92598 |



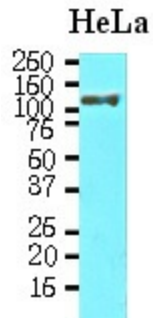
[View online »](#)

Background:

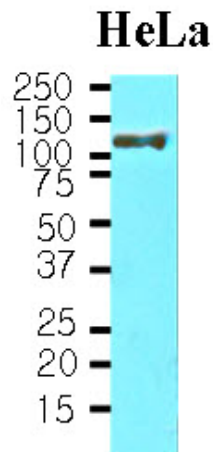
Hsp105 is a mammalian member of the HSP105/110 family, a diverged subgroup of the HSP70 family. HSP105 exists as two isoforms, alpha and beta. Hsp105 alpha associates with Hsp70/Hsc70 as complexes in vivo and regulates the chaperone activity of Hsp70/Hsc70 negatively in vitro and in vivo. Hsp105 α is constitutively expressed and also induced by various stress, whereas Hsp105 β , lacking 44 amino acids from Hsp105 α , is specifically expressed during mild heat shock. Although Hsp105 α is shown to localize in the cytoplasm of mammalian cells, cellular localization of Hsp105 β is not known.

Synonyms:

Heat shock 110 kDa protein, Antigen NY-CO-25, HSPH1, HSP-105, HSP110, KIAA0201

Product images:


Cell lysates of HeLa (30ug) were resolved by SDS-PAGE, transferred to NC membrane and probed with anti-human Hsp105 alpha (1:1,000). Proteins were visualized using a goat anti-mouse secondary antibody conjugated to HRP and an ECL detection system.



Western blot analysis: Cell lysates of HeLa (30ug) were resolved by SDS-PAGE, transferred to NC membrane and probed with anti-human HSP105 a (1:1000). Proteins were visualized using a goat anti-mouse secondary antibody conjugated to HRP and an ECL detection system.