

## Product datasheet for **AM03179PU-N**

### Hsp105 (HSPH1) (Isoform alpha) Mouse Monoclonal Antibody [Clone ID: J1G12]

#### Product data:

Product Type:	Primary Antibodies
Clone Name:	J1G12
Applications:	ELISA, WB
Recommended Dilution:	ELISA. Western blot: 1:500 ~ 1,000 (starting dilution 1:1000).
Reactivity:	Human
Host:	Mouse
Isotype:	IgG2b
Clonality:	Monoclonal
Immunogen:	Recombinant human HSP105 $\alpha$ (1-858 aa) purified from <i>E. coli</i>
Specificity:	This antibody detects Heat Shock Protein 105 alpha (HSP105a).
Formulation:	PBS, pH 7.4 containing 0.02% Sodium Azide and 10% Glycerol State: Purified State: Liquid purified Ig fraction
Concentration:	lot specific
Purification:	Protein-G affinity chromatography
Conjugation:	Unconjugated
Storage:	Store undiluted at 2-8°C for up to two weeks or (in aliquots) at -20°C for longer. Avoid repeated freezing and thawing.
Stability:	Shelf life: one year from despatch.
Gene Name:	heat shock protein family H (Hsp110) member 1
Database Link:	<a href="#">Entrez Gene 10808 Human Q92598</a>



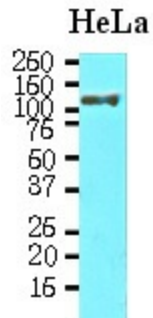
[View online »](#)

**Background:**

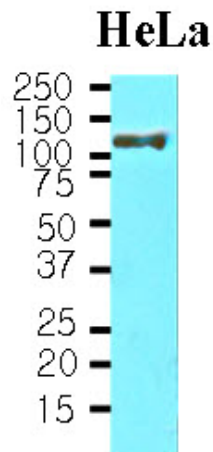
Hsp105 is a mammalian member of the HSP105/110 family, a diverged subgroup of the HSP70 family. HSP105 exists as two isoforms, alpha and beta. Hsp105 alpha associates with Hsp70/Hsc70 as complexes in vivo and regulates the chaperone activity of Hsp70/Hsc70 negatively in vitro and in vivo. Hsp105  $\alpha$  is constitutively expressed and also induced by various stress, whereas Hsp105  $\beta$ , lacking 44 amino acids from Hsp105  $\alpha$ , is specifically expressed during mild heat shock. Although Hsp105  $\alpha$  is shown to localize in the cytoplasm of mammalian cells, cellular localization of Hsp105  $\beta$  is not known.

**Synonyms:**

Heat shock 110 kDa protein, Antigen NY-CO-25, HSPH1, HSP-105, HSP110, KIAA0201

**Product images:**

Cell lysates of HeLa (30ug) were resolved by SDS-PAGE, transferred to NC membrane and probed with anti-human Hsp105 alpha (1:1,000). Proteins were visualized using a goat anti-mouse secondary antibody conjugated to HRP and an ECL detection system.



Western blot analysis: Cell lysates of HeLa (30ug) were resolved by SDS-PAGE, transferred to NC membrane and probed with anti-human HSP105 a (1:1000). Proteins were visualized using a goat anti-mouse secondary antibody conjugated to HRP and an ECL detection system.