

Product datasheet for **AM03177PU-S**

Cyclophilin B (PPIB) (26-216) Mouse Monoclonal Antibody [Clone ID: k2E2]

Product data:

Product Type:	Primary Antibodies
Clone Name:	k2E2
Applications:	ELISA, WB
Recommended Dilution:	ELISA. Western blot: 1/1,000-1/2,000 (recommended starting dilution is 1/1,000).
Reactivity:	Human
Host:	Mouse
Isotype:	IgG1
Clonality:	Monoclonal
Immunogen:	Recombinant Human Cyclophilin B (26-216aa) purified from E. coli
Specificity:	This antibody detects Cyclophilin B.
Formulation:	PBS, pH 7.4 containing 0.02% Sodium Azide and 10% Glycerol State: Purified State: Liquid purified Ig fraction
Concentration:	lot specific
Purification:	Protein-G affinity chromatography
Conjugation:	Unconjugated
Storage:	Store undiluted at 2-8°C for up to two weeks or (in aliquots) at -20°C for longer. Avoid repeated freezing and thawing.
Stability:	Shelf life: one year from despatch.
Gene Name:	peptidylprolyl isomerase B
Database Link:	Entrez Gene 5479 Human P23284



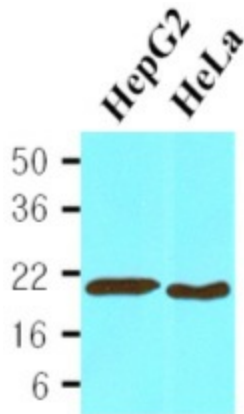
[View online »](#)

Background:

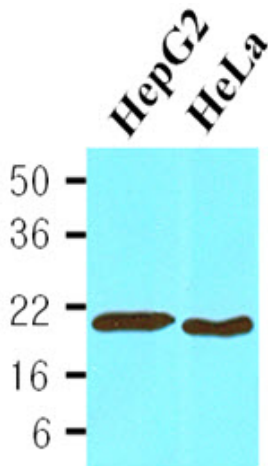
Cyclophilin B (also known as PPIB, peptidylpropyl isomerase B) is a cyclosporine-binding protein and is mainly located within the endoplasmic reticulum. It is associated with the secretory pathway and released in biological fluids. This protein can bind to cells derived from T- and B-lymphocytes, and may regulate cyclosporine A-mediated immunosuppression. Cyclophilin B is necessary for the prolactin-induced proliferation, cell growth, and the nuclear retrotransport of prolactin.

Synonyms:

PPIase B, Rotamase B, S-cyclophilin, CYP-S1, PPIB, CYPB, SCYLP

Product images:


Cell lysates of HepG2 (30ug) and HeLa (30ug) were resolved by SDS-PAGE, transferred to NC membrane and probed with anti-human Cyclophilin B (1:1,000). Proteins were visualized using a goat anti-mouse secondary antibody conjugated to HRP and an ECL detection system.



Western blot analysis: Cell lysates of HepG2 (30ug) and HeLa (30ug) were resolved by SDS-PAGE, transferred to NC membrane and probed with anti-human Cyclophilin B (1:1,000). Proteins were visualized using a goat anti-mouse secondary antibody conjugated to HRP and an ECL detection system.