

Product datasheet for **AM03172PU-S**

NAPSIN A (NAPSA) (N-term) Mouse Monoclonal Antibody [Clone ID: KCG1.1]

Product data:

Product Type:	Primary Antibodies
Clone Name:	KCG1.1
Applications:	IHC
Recommended Dilution:	Immunohistochemistry on Paraffin Sections: Use at 1/50-1/100 dilution in an ABC method (30 minutes at room temperature). However, depending upon the fixation conditions and the staining system employed, optimal incubation should be determined by the end user. Formalin fixed paraffin embedded tissue sections require high temperature antigen unmasking with 10 mM citrate buffer, pH 6.0 prior to immunostaining. <i>Positive Control:</i> Lung Adenocarcinoma.
Reactivity:	Human
Host:	Mouse
Isotype:	IgG1
Clonality:	Monoclonal
Immunogen:	Synthetic peptide from N terminus of Human Napsin A
Specificity:	Napsin A and TTF-1 reactivities were determined immunohistochemically on formalin-fixed paraffin embedded cell blocks from 50 pleural effusion (5 mesotheliomas, 10 mesothelial proliferations, 12 pulmonary, and 23 nonpulmonary metastases). TTF-1 and Napsin A were positive in 8/12 and 10/12 pulmonary adenocarcinomas, respectively. The specificity of this antibody for primary lung adenocarcinoma is 47 out of 58 (81%), primary lesions were positive. This antibody may be a useful tool as a tumor marker for primary lung adenocarcinoma.
Formulation:	State: Purified State: Liquid purified Ig fraction Preservative: < 0.1% Sodium Azide
Conjugation:	Unconjugated
Storage:	Store the antibody undiluted at 2-8°C.
Stability:	Shelf life: one year from despatch.
Gene Name:	napsin A aspartic peptidase



[View online »](#)

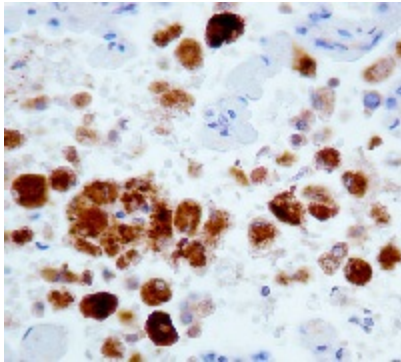
Database Link: [Entrez Gene 9476 Human](#)
[O96009](#)

Background: Napsin is found in two isoforms, A and B, with highly homologous gene sequences. Napsin A has a molecular weight of 35.0 kDa and is also known as TA02. Napsin A is an aspartic proteinase which is expressed in the lung and involved in processing surfactant protein B (SP-B). It is also expressed in the kidney.

Synonyms: NAPSA, NAP1, Napsin-1, Aspartyl protease 4, TA01/TA02

Note: Cellular Localization: Cytoplasmic

Product images:



Formalin fixed paraffin embedded human lung adenocarcinoma stained with Napsin A monoclonal antibody (AM03172PU)