

## Product datasheet for **AM03137PU-S**

### Stefin B (CSTB) (1-98) Mouse Monoclonal Antibody [Clone ID: 2F1]

#### Product data:

Product Type:	Primary Antibodies
Clone Name:	2F1
Applications:	ELISA, WB
Recommended Dilution:	ELISA. Western blot: 1:1000 ~ 1:3,000; starting diluton 1:1000.
Reactivity:	Human
Host:	Mouse
Isotype:	IgG2b
Clonality:	Monoclonal
Immunogen:	Recombinant human CSTB (1-98aa) purified from E. coli
Specificity:	This antibody detetctcs CSTB.
Formulation:	PBS, pH 7.4 containing 0.02% Sodium Azide and 10% Glycerol State: Purified State: Liquid Ig fraction
Concentration:	lot specific
Purification:	Protein-G affinity chromatography
Conjugation:	Unconjugated
Storage:	Store undiluted at 2-8°C for up to two weeks or (in aliquots) at -20°C for longer. Avoid repeated freezing and thawing.
Stability:	Shelf life: one year from despatch.
Gene Name:	cystatin B
Database Link:	<a href="#">Entrez Gene 1476 Human P04080</a>



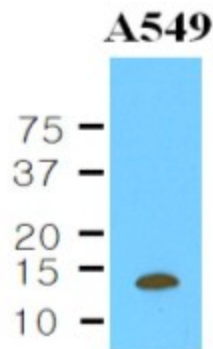
[View online »](#)

**Background:**

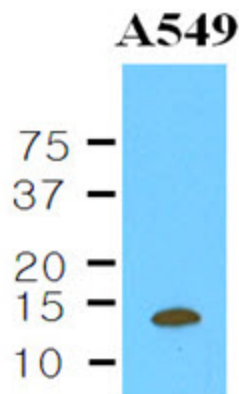
CSTB, also known as Cystatin B is an anti-protease implicated in myoclonus epilepsy, a degenerative disease of the central nervous system. The cystatin superfamily encompasses proteins that contain multiple cystatin-like sequences. Some of the members are active cysteine protease inhibitors, while others have lost or perhaps never acquired this inhibitory activity. This protein is able to form a dimer stabilized by noncovalent forces and is thought to play a role in protecting against the proteases leaking from lysosomes in cells. CSTB is located in the lysosomes and the cytoplasm, but also in the nucleus.

**Synonyms:**

Stefin-B, CPI-B, CSTB, CST6, STFB

**Product images:**

Western blot analysis The Cell lysates of A549 (35ug) were resolved by SDS-PAGE, transferred to NC membrane and probed with anti-human CSTB (1:1000). Proteins were visualized using a goat anti-mouse secondary antibody conjugated to HRP and an ECL detection system.



The Cell lysates of A549 (35ug) were resolved by SDS-PAGE, transferred to NC membrane and probed with anti-human CSTB (1:1000). Proteins were visualized using a goat anti-mouse secondary antibody conjugated to HRP and an ECL detection system.