

Product datasheet for **AM03132PU-N**

CD69 Mouse Monoclonal Antibody [Clone ID: FN50]

Product data:

Product Type:	Primary Antibodies
Clone Name:	FN50
Applications:	FC, FN, IHC, WB
Recommended Dilution:	Flow Cytometry: 5 µg/ml. Western blot: 53 kDa, under reducing conditions it shows two bands of 29 and 32 kDa. Immunohistochemistry on Frozen Sections. Functional Assay: When stimulating peripheral blood T cells, FN50 antibody together with TPA synergistically increases cell volume and RNA/DNA synthesis. Addition of FN50 to stimulated peripheral blood B cells has similar, but weaker effect.
Reactivity:	Human
Host:	Mouse
Isotype:	IgG1
Clonality:	Monoclonal
Immunogen:	Anti-µ-stimulated human B lymphocytes
Specificity:	The antibody recognizes CD69, an lymphocyte early activation marker detected as a 53 kDa band under nonreducing and as 29 + 32 kDa double band under reducing SDS-PAGE conditions.
Formulation:	PBS, pH~7.4 State: Aff - Purified State: Liquid purified Ig fraction (> 95% by SDS-PAGE) Preservative: 15 mM Sodium Azide
Concentration:	lot specific
Purification:	Affinity Chromatography on Protein A
Conjugation:	Unconjugated
Storage:	Store undiluted at 2-8°C. DO NOT FREEZE!
Stability:	Shelf life: one year from despatch.
Gene Name:	CD69 molecule



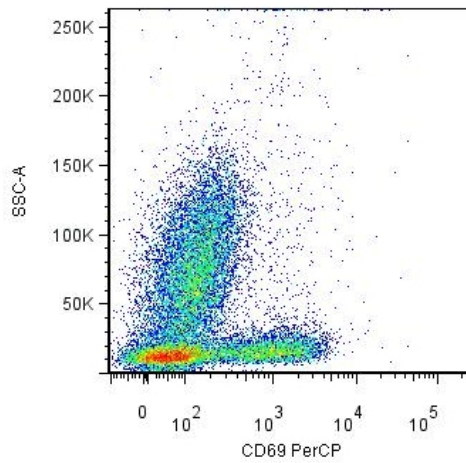
[View online »](#)

Database Link: [Entrez Gene 969 Human Q07108](#)

Background: CD69 (C-type lectin domain family 2 C, CLEC2C, also known as AIM) is one of the earliest inducible cell surface molecules acquired during leukocyte activation. This glycoprotein serves as a lectin-type receptor in lymphocytes, NK cells and platelets; it is involved in lymphocyte proliferation. CD69 expression is counteracted on T cells in the AIDS stage of HIV infection, and may be also predictive for clinical response to chemoimmunotherapy.

Synonyms: GP32/28, Leu-23, MLR-3, EA1, BL-AC/P26, AIM

Product images:



Surface staining of Human peripheral blood using anti-CD69 antibody (clone FN50) after overnight activation of T cells by anti-CD3 (clone MEM-57).