

Product datasheet for **AM03131PU-N**

CPNE7 Mouse Monoclonal Antibody [Clone ID: CPNE7-01]

Product data:

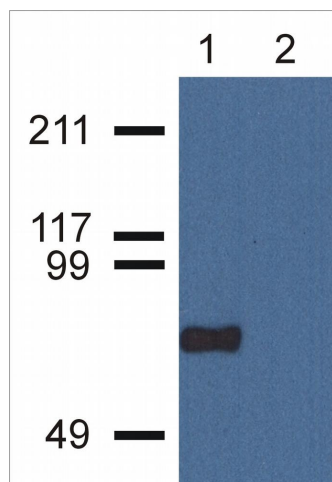
Product Type:	Primary Antibodies
Clone Name:	CPNE7-01
Applications:	WB
Recommended Dilution:	Western Blot.
Reactivity:	Human
Host:	Mouse
Isotype:	IgG
Clonality:	Monoclonal
Immunogen:	Bacterially produced GST-fused C terminus of Human CPNE7
Specificity:	The antibody recognizes C terminus of human CPNE7, a calcium-binding cytoplasmic protein expressed mainly in brain.
Formulation:	PBS, pH~7.4 with 15 mM Sodium Azide as preservative. State: Aff - Purified State: Liquid purified Ig fraction (> 95% pure by SDS-PAGE).
Concentration:	lot specific
Purification:	Affinity Chromatography on Protein A.
Conjugation:	Unconjugated
Storage:	Store the antibody undiluted at 2-8°C for one month or (in aliquots) at -20°C for longer. Avoid repeated freezing and thawing.
Stability:	Shelf life: one year from despatch.
Gene Name:	copine 7
Database Link:	Entrez Gene 27132 Human Q9UBL6
Background:	CPNE7 (copine VII) is a member of highly conserved copine family, which is composed of calcium-dependent membrane-binding proteins containing two N-terminal C domains and a C-terminal A domain (von Willenbrand domain). There is an evidence that copines (at least copine III) may represent a novel unconventional kinase family. CPNE7 is expressed mainly in brain, but also in duodenum, jejunum, thymus and testes.



[View online »](#)

Synonyms: CPNE7, Copine VII

Product images:



Western Blotting analysis of CPNE7 using CPNE7-01 antibody in nuclear cell lysate (1) and cytoplasmic fraction (2) of HeLa cell extracts. Primary antibody: 1 ug/ml