

Product datasheet for **AM03128PU-S**

Hsp60 (HSPD1) (1-573) Mouse Monoclonal Antibody [Clone ID: 2E4]

Product data:

Product Type:	Primary Antibodies
Clone Name:	2E4
Applications:	ELISA, FC, IF, IHC, WB
Recommended Dilution:	ELISA. Western blot: 1/1,000-1/2,000. Immunohistochemistry on Paraffin Embedded Sections: 1/50-1/100 (following antigen retrieval and detection by DAB). Flow cytometry. Immunocytochemistry / Immunofluorescence.
Reactivity:	Human
Host:	Mouse
Isotype:	IgG1
Clonality:	Monoclonal
Immunogen:	Recombinant human HSP60 (1-573 aa) purified from <i>E. coli</i>
Specificity:	This antibody detects Human HSP60 at aa 1-573. Other species not tested.
Formulation:	PBS, pH 7.4 containing 0.02% Sodium Azide and 10% Glycerol State: Purified State: Liquid purified Ig fraction
Concentration:	lot specific
Purification:	Protein-G affinity chromatography
Conjugation:	Unconjugated
Storage:	Store undiluted at 2-8°C for up to two weeks or (in aliquots) at -20°C for longer. Avoid repeated freezing and thawing.
Stability:	Shelf life: one year from despatch.
Gene Name:	heat shock protein family D (Hsp60) member 1
Database Link:	Entrez Gene 3329 Human P10809



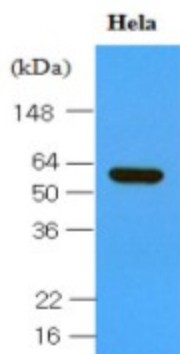
[View online »](#)

Background:

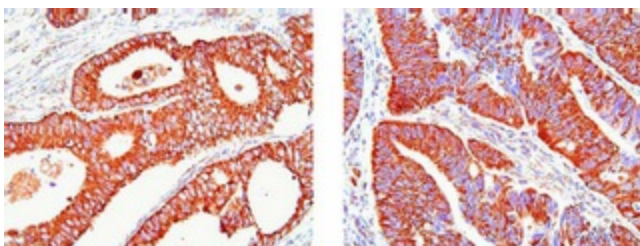
Heat shock protein 60 (HSP60) is a mitochondrial chaperonin that is typically held responsible for the transportation and refolding of proteins from the cytoplasm into the mitochondrial matrix. HSP60 is the ~60kDa mammalian equivalent to GroEL of E.coli. Process of HSP60 is regulated by the cochaperonin HSP10, a single heptameric ring of ~10kD subunits that forms a complex with HSP60. HSP10 coordinates the ATPase activity of the HSP60 subunits to allow the release of bound polypeptide in a manner productive for folding.

Synonyms:

HSP-60, HSPD1, Heat shock protein 60, Chaperonin 60, HuCHA60, GROEL, GroEL Homolog, CPN60

Product images:


Western blot analysis : Cell lysates of HeLa (30 ug) were resolved by SDS-PAGE, transferred to NC membrane and probed with anti-human HSP60 No. (1/1000). Proteins were visualized using a goat anti-mouse secondary antibody conjugated to HRP and an ECL detection system.



Immunohistochemistry : Paraffin embedded sections of human colon cancer tissue were incubated with anti-human Hsp60No. (1/50) for 2 hours at room temperature. Antigen retrieval was performed in 0.1M sodium citrate buffer and detected using Diaminobenzidine (DAB).