

Product datasheet for **AM03118PU-S**

PPP1A (PPP1CA) Mouse Monoclonal Antibody [Clone ID: 4G3]

Product data:

Product Type:	Primary Antibodies
Clone Name:	4G3
Applications:	ELISA, IF, IHC, WB
Recommended Dilution:	ELISA. Western blot (1/500-1/2,000). Immunofluorescence. Immunohistochemistry on Paraffin Sections (5 µg/ml).
Reactivity:	Human
Host:	Mouse
Isotype:	IgG2a
Clonality:	Monoclonal
Immunogen:	Recombinant human PPP1CA (30-299aa) purified from E. coli
Specificity:	This antibody is specific for PPP1CA.
Formulation:	PBS, pH 7.4 containing 0.02% Sodium Azide and 10% Glycerol State: Purified State: Liquid purified Ig fraction.
Concentration:	lot specific
Purification:	Protein-G affinity chromatography
Conjugation:	Unconjugated
Storage:	Store undiluted at 2-8°C for up to two weeks or (in aliquots) at -20°C for longer. Avoid repeated freezing and thawing.
Stability:	Shelf life: one year from despatch.
Gene Name:	protein phosphatase 1 catalytic subunit alpha
Database Link:	Entrez Gene 5499 Human P62136



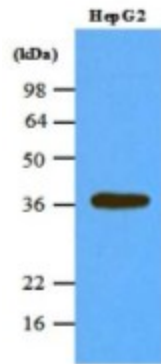
[View online »](#)

Background:

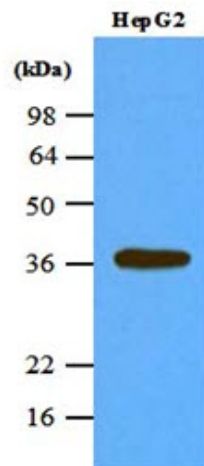
Protein phosphatase 1, catalytic subunit, alpha isoform, also known as PPP1CA, is one of the three catalytic subunits of protein phosphatase 1. The protein is highly conserved in eukaryotic cells and play a role in dephosphorylating substrates such as the postsynaptic density-associated Ca²⁺/calmodulin dependent protein kinase II. It participate in the regulation of a variety of cellular processes, such as cell division, glycogen metabolism, muscle contractility, protein synthesis and apoptosis.

Synonyms:

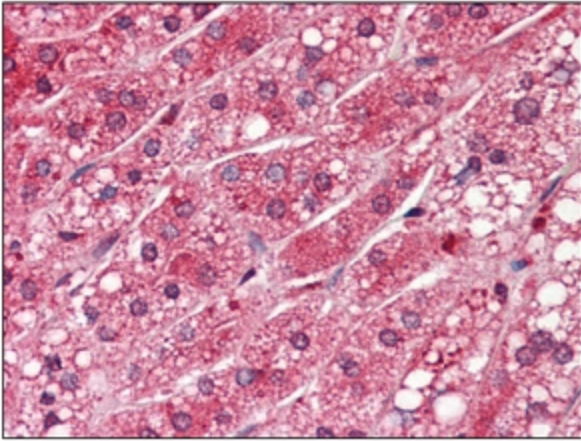
PPP1A, PP-1A

Product images:

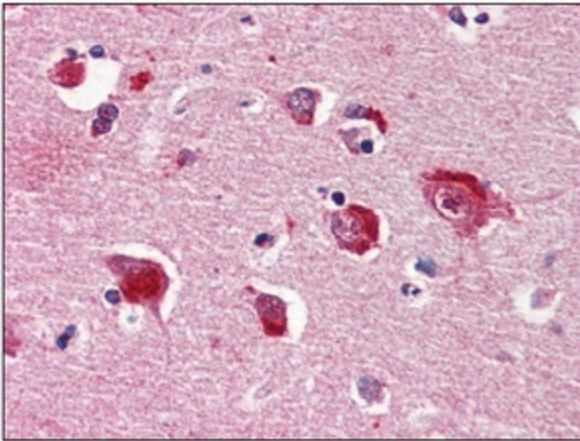
Western blot analysis Cell lysates of HepG2 (45 ug) were resolved by SDS-PAGE, transferred to NC membrane and probed with anti-human PPP1CA (1:1000). Proteins were visualized using a goat anti-mouse secondary antibody conjugated to HRP and an ECL detection system.



Cell lysates of HepG2 (45ug) were resolved by SDS-PAGE, transferred to NC membrane and probed with anti-human PPP1CA (1:1000). Proteins were visualized using a goat anti-mouse secondary antibody conjugated to HRP and an ECL detection system.



Immunohistochemistry: -N PPP1CA antibody staining of Formalin-Fixed, Paraffin-Embedded Human Adrenal at 5 ug/ml followed by biotinylated anti-mouse IgG secondary antibody, alkaline phosphatase-streptavidin and chromogen.



Immunohistochemistry: -N PPP1CA antibody staining of Formalin-Fixed, Paraffin-Embedded Human Brain, Cortex at 5 ug/ml followed by biotinylated anti-mouse IgG secondary antibody, alkaline phosphatase-streptavidin and chromogen.