

Product datasheet for **AM03117PU-S**

CIB1 (1-191) Mouse Monoclonal Antibody [Clone ID: 1D1]

Product data:

| | |
|-----------------------|--|
| Product Type: | Primary Antibodies |
| Clone Name: | 1D1 |
| Applications: | ELISA, IF, WB |
| Recommended Dilution: | Western blot (1/1000 ~ 1/2,000). ELISA. Immunofluorescence. |
| Reactivity: | Human |
| Host: | Mouse |
| Isotype: | IgG2b |
| Clonality: | Monoclonal |
| Immunogen: | Recombinant human CIB1 (1-191aa) purified from E. coli |
| Specificity: | This antibody is specific for CIB1. |
| Formulation: | PBS, pH 7.4 containing 0.02% Sodium Azide and 10% Glycerol State: Aff - Purified State: Liquid Ig fraction |
| Concentration: | lot specific |
| Purification: | Protein-G affinity chromatography |
| Conjugation: | Unconjugated |
| Storage: | Store undiluted at 2-8°C for up to two weeks or (in aliquots) at -20°C for longer. Avoid repeated freezing and thawing. |
| Stability: | Shelf life: one year from despatch. |
| Gene Name: | calcium and integrin binding 1 |
| Database Link: | Entrez Gene 10519 Human Q99828 |



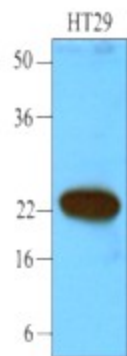
[View online »](#)

Background:

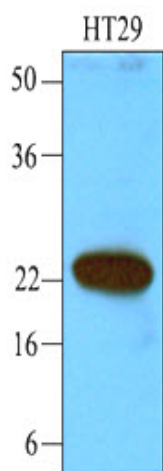
CIB1 (Calcium and integrin binding 1) is regulatory protein with 50% homology to calmodulin and calcineurin B, that encodes a member of the calcium-binding protein family. The specific function of this protein has not yet been determined; however this protein is known to interact with DNA-dependent protein kinase and may play a role in kinase-phosphatase regulation of DNA end joining. Also CIB1 is widely expressed and binds to a number of effectors, such as integrin α IIb, PAK1, and polo-like kinases in different tissues.

Synonyms:

Calmyrin, KIP, PRKDCIP, SIP2-28, CIBP

Product images:

Western blot analysis Cell lysates of HT29 (40 ug) were resolved by SDS-PAGE, transferred to NC membrane and probed with anti-human CIB1 (1:1000). Proteins were visualized using a goat anti-mouse secondary antibody conjugated to HRP and an ECL detection system.



Cell lysates of HT29 (40ug) were resolved by SDS-PAGE, transferred to NC membrane and probed with anti-human CIB1 (1:1000). Proteins were visualized using a goat anti-mouse secondary antibody conjugated to HRP and an ECL detection system.