

Product datasheet for **AM03117PU-N**

CIB1 (1-191) Mouse Monoclonal Antibody [Clone ID: 1D1]

Product data:

Product Type:	Primary Antibodies
Clone Name:	1D1
Applications:	ELISA, IF, WB
Recommended Dilution:	Western blot (1/1000 ~ 1/2,000). ELISA. Immunofluorescence.
Reactivity:	Human
Host:	Mouse
Isotype:	IgG2b
Clonality:	Monoclonal
Immunogen:	Recombinant human CIB1 (1-191aa) purified from E. coli
Specificity:	This antibody is specific for CIB1.
Formulation:	PBS, pH 7.4 containing 0.02% Sodium Azide and 10% Glycerol State: Aff - Purified State: Liquid Ig fraction
Concentration:	lot specific
Purification:	Protein-G affinity chromatography
Conjugation:	Unconjugated
Storage:	Store undiluted at 2-8°C for up to two weeks or (in aliquots) at -20°C for longer. Avoid repeated freezing and thawing.
Stability:	Shelf life: one year from despatch.
Gene Name:	calcium and integrin binding 1
Database Link:	Entrez Gene 10519 Human Q99828



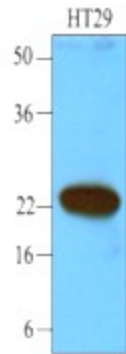
[View online »](#)

Background:

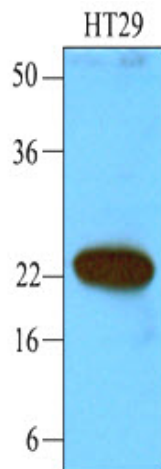
CIB1 (Calcium and integrin binding 1) is regulatory protein with 50% homology to calmodulin and calcineurin B, that encodes a member of the calcium-binding protein family. The specific function of this protein has not yet been determined; however this protein is known to interact with DNA-dependent protein kinase and may play a role in kinase-phosphatase regulation of DNA end joining. Also CIB1 is widely expressed and binds to a number of effectors, such as integrin α IIb, PAK1, and polo-like kinases in different tissues.

Synonyms:

Calmyrin, KIP, PRKDCIP, SIP2-28, CIBP

Product images:

Western blot analysis Cell lysates of HT29 (40 ug) were resolved by SDS-PAGE, transferred to NC membrane and probed with anti-human CIB1 (1:1000). Proteins were visualized using a goat anti-mouse secondary antibody conjugated to HRP and an ECL detection system.



Cell lysates of HT29 (40ug) were resolved by SDS-PAGE, transferred to NC membrane and probed with anti-human CIB1 (1:1000). Proteins were visualized using a goat anti-mouse secondary antibody conjugated to HRP and an ECL detection system.