

Product datasheet for **AM03101PU-N**

HLA Class II DR Mouse Monoclonal Antibody [Clone ID: MEM-12]

Product data:

Product Type:	Primary Antibodies
Clone Name:	MEM-12
Applications:	FC, IP, WB
Recommended Dilution:	Flow Cytometry: 2 µg/ml. Positive Control: B-lymphocytes, Monocytes, DAUDI cell line, RAJI cell line. Immunoprecipitation: Positive control: B-lymphocytes, Monocytes, DAUDI cell line, RAJI cell line. Western Blot (Non-Reducing Conditions): Positive control: B-lymphocytes, Monocytes, DAUDI cell line, RAJI cell line. <u>Sample preparation:</u> Resuspend approx. 50 mil. cells in 1 ml cold Lysis buffer (1% laurylmaltoside in 20 mM Tris/Cl, 100 mM NaCl pH 8.2, 50 mM NaF including Protease inhibitor Cocktail). Incubate 60 min on ice. Centrifuge to remove cell debris. Mix lysate with non-reducing SDS-PAGE sample buffer. Do not heat/boil.
Reactivity:	Human
Host:	Mouse
Isotype:	IgG1
Clonality:	Monoclonal
Immunogen:	Thymocyte membrane
Specificity:	The antibody MEM-12 recognizes common epitope on human HLA-DR which is dependent on the association of alpha and beta chains. DR is the isotype of human MHC Class II molecules expressed on antigen-presenting cells (APC; Dendritic cells, B Lymphocytes, Monocytes, Macrophages).
Formulation:	PBS, pH 7.4 with 15 mM sodium azide as preservative State: Aff - Purified State: Liquid purified IgG fraction (> 95% pure by SDS-PAGE)
Concentration:	lot specific
Purification:	Affinity Chromatography on Protein A
Conjugation:	Unconjugated



[View online »](#)

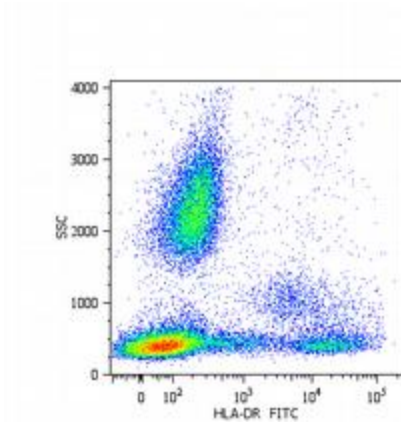
Storage: Store the antibody undiluted at 2-8°C for one month or (in aliquots) at -20°C for longer. Avoid repeated freezing and thawing.

Stability: Shelf life: one year from despatch.

Background: HLA DR, like other MHC class II molecules, is a transmembrane glycoprotein composed of an alpha chain (36 kDa) and a beta chain (27 kDa). It is expressed primarily on antigen presenting cells such as B lymphocytes, monocytes, macrophages, thymic epithelial cells and activated T lymphocytes. Three loci, DR, DQ and DP, encode the major expressed products of the human class II region. The human MHC class II molecules bind intracellularly processed peptides and present them to T helper cells. They therefore have a critical role in the initiation of the immune response.

Synonyms: HLA-DR, HLA class II histocompatibility antigen DR, MHC class II antigen DR

Product images:



Surface staining of human peripheral blood cells with anti-human HLA-DR antibody (MEM-12) FITC.