

Product datasheet for **AM03101FC-N**

HLA Class II DR Mouse Monoclonal Antibody [Clone ID: MEM-12]

Product data:

Product Type:	Primary Antibodies
Clone Name:	MEM-12
Applications:	FC
Recommended Dilution:	Flow Cytometry analysis of human blood cells using 20 µl reagent / 100 µl of whole blood or 10e6 cells in a suspension. The content of a vial (2 ml) is sufficient for 100 tests.
Reactivity:	Human
Host:	Mouse
Isotype:	IgG1
Clonality:	Monoclonal
Immunogen:	Thymocyte membrane
Specificity:	This antibody recognizes common epitope on human HLA-DR which is dependent on the association of alpha and beta chains. DR is the isotype of human MHC Class II molecules expressed on antigen-presenting cells (APC; dendritic cells, B lymphocytes, monocytes, macrophages).
Formulation:	Phosphate buffered saline (PBS) containing 15 mM sodium azide and 0.2% (w/v) high-grade protease free Bovine Serum Albumin (BSA) as a stabilizing agent Label: FITC State: Liquid purified Ig fraction Label: Conjugated with Fluorescein isothiocyanate under optimum conditions. The reagent is free of unconjugated and adjusted for direct use
Conjugation:	FITC
Storage:	Store the antibody at 2 - 8 °C. DO NOT FREEZE! This product is photosensitive and should be protected from light.
Stability:	Shelf life: one year from despatch.
Synonyms:	HLA-DR, HLA class II histocompatibility antigen DR, MHC class II antigen DR



[View online »](#)

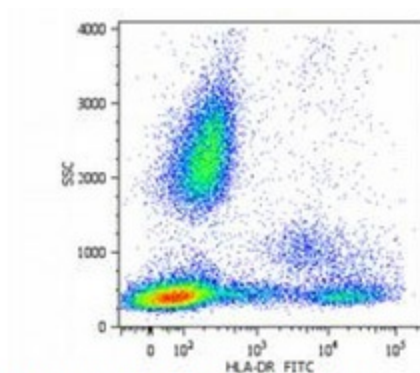
Product images:

Fig. 1. Flow Cytometry analysis

Surface staining of human peripheral blood cells with anti-human HLA-DR (MEM-12) FITC.