

## Product datasheet for **AM03094PU-N**

### CD30 (TNFRSF8) Mouse Monoclonal Antibody [Clone ID: MEM-268]

#### Product data:

Product Type:	Primary Antibodies
Clone Name:	MEM-268
Applications:	FC, IHC
Recommended Dilution:	<b>Flow Cytometry:</b> 5 µg/ml. <b>Immunohistochemistry on Paraffin Sections</b> (5 µg/ml). Positive tissue: thymus.
Reactivity:	Human
Host:	Mouse
Isotype:	IgG2a, kappa
Clonality:	Monoclonal
Immunogen:	Expression vector containing CD30 cDNA (booster suspension of THP-1 cell line)
Specificity:	The antibody MEM-268 recognizes extracellular part of CD30 (Ki-1 antigen), a 105 kDa single chain glycoprotein expressed on Hodgkin's and Reed-Sternberg cells; it is also found in Burkitt's lymphomas, virus-infected T and B lymphocytes, and on normal B and T lymphocytes after activation (T lymphocytes that produce Th2-type cytokines and on CD4+/CD8+ T lymphocytes that co-express CD45RO and the IL4 receptor).
Formulation:	Phosphate buffered saline (PBS), pH 7.4 containing 15 mM Sodium Azide as preservative State: Purified State: Liquid purified Ig fraction (> 95% pure by SDS-PAGE)
Concentration:	lot specific
Purification:	Affinity Chromatography on Protein A
Conjugation:	Unconjugated
Storage:	Store undiluted at 2-8°C. <b>DO NOT FREEZE!</b>
Stability:	Shelf life: one year from despatch.
Gene Name:	tumor necrosis factor receptor superfamily member 8
Database Link:	<a href="#">Entrez Gene 943 Human P28908</a>



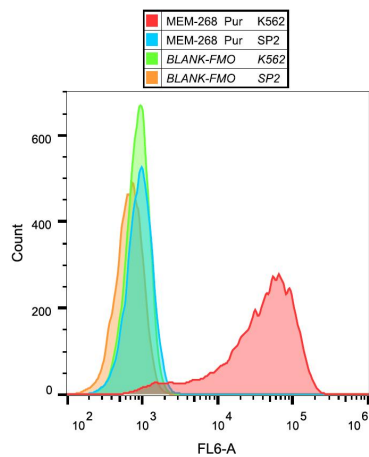
[View online »](#)

**Background:**

CD30 is a type I transmembrane glycoprotein of the TNF receptor superfamily. CD30 was originally identified as a cell surface antigen of Hodgkins and Reed-Sternberg cells using monoclonal antibody Ki-1. The ligand for CD30 is CD30L (CD153). The binding of CD30 to CD30L mediates pleiotropic effects including cell proliferation, activation, differentiation, and apoptotic cell death. CD30 has a critical role in the pathophysiology of Hodgkin's disease and other CD30+ lymphomas. CD30 acts as a costimulatory molecule in thymic negative selection. In addition to its expression on Hodgkin's and Reed-Sternberg cells, CD30 is also found in some non-Hodgkin's lymphomas (including Burkitt's lymphomas), virus-infected T and B cells, and on normal T and B cells after activation. In T cells, CD30 expression is present on a subset of T cells that produce Th2-type cytokines and on CD4+/CD8+ thymocytes that co-express CD45RO and the IL4 receptor. Soluble form of CD30 (sCD30) serves as a marker reflecting Th2 immune response.

**Synonyms:**

TNFRSF8, D1S166E, CD30L receptor, KI-1 antigen

**Product images:**

Surface staining of K562 cells with anti-human CD30 (MEM-268) purified, GAM APC.