

Product datasheet for **AM03090AC-N**

CD62L (SELL) Mouse Monoclonal Antibody [Clone ID: LT-TD180]

Product data:

Product Type:	Primary Antibodies
Clone Name:	LT-TD180
Applications:	FC
Recommended Dilution:	Flow cytometry: 10 µl reagent / 100 µl of whole blood or 10 ⁶ cells in a suspension. The content of a vial (1 ml) is sufficient for 100 tests.
Reactivity:	Human
Host:	Mouse
Isotype:	IgG1
Clonality:	Monoclonal
Immunogen:	Peripheral blood leukocytes
Specificity:	The antibody LT-TD180 reacts with CD62L (L-selectin), a 74-95 kDa single chain type I glycoprotein expressed on most peripheral blood B lymphocytes, T lymphocytes, monocytes and granulocytes; it is also present on a subset of NK cells and certain hematopoietic malignant cells.
Formulation:	Phosphate buffered saline (PBS) containing 15 mM sodium azide Label: APC State: Liquid Ig fraction Label: Conjugated with cross-linked Allophycocyanin under optimum conditions. The conjugate is purified by size-exclusion chromatography and adjusted for direct use.
Conjugation:	APC
Storage:	Store the antibody at 2 - 8 °C. DO NOT FREEZE! This product is photosensitive and should be protected from light.
Stability:	Shelf life: one year from despatch.
Gene Name:	selectin L
Database Link:	Entrez Gene 6402 Human P14151



[View online »](#)

Background:

CD62L (L-selectin) is an adhesion glycoprotein that is constitutively expressed on the cell surface of leukocytes and mediates their homing to inflammatory sites and peripheral lymph nodes by enabling rolling along the venular wall. CD62L is also involved in activation-induced neutrophil aggregation. Activation-dependent CD62L shedding, however, counteracts neutrophil rolling. CD62L has also signaling roles including enhance of chemokine receptor expression. Similarly to CD62P, the major ligand of CD62L is PSGL-1 (P-selectin glycoprotein ligand-1).

Synonyms:

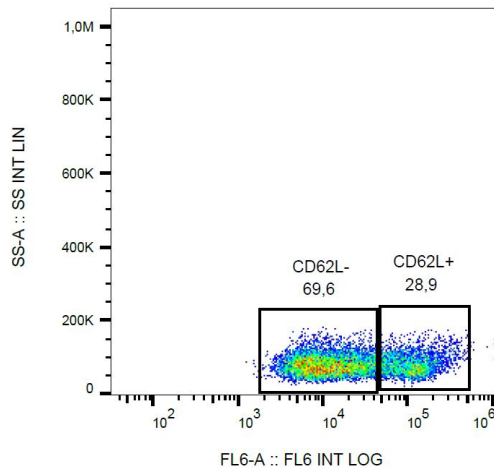
SELL, LNHR, LYAM1, Leu-8, TQ1, gp90-MEL, LECAM1, LAM-1

Protein Families:

Druggable Genome, ES Cell Differentiation/IPS, Transmembrane

Protein Pathways:

Cell adhesion molecules (CAMs)

Product images:

Surface staining of human peripheral blood cells with anti-CD62L (LT-TD180) APC.