

## Product datasheet for **AM03084PU-N**

### HLA-G (HLA-G) Mouse Monoclonal Antibody [Clone ID: 01G]

#### Product data:

Product Type:	Primary Antibodies
Clone Name:	01G
Applications:	ELISA, FC, IF, IHC, IP
Recommended Dilution:	<b>Flow Cytometry:</b> 5-6 µg/ml. <b>Immunoprecipitation.</b> <b>Immunohistochemistry (frozen sections).</b> <b>Immunocytochemistry.</b> <b>ELISA.</b>
Reactivity:	Human
Host:	Mouse
Isotype:	IgG1
Clonality:	Monoclonal
Immunogen:	HLA-B27 transgenic mice were immunized with H-2 identical murine cells transfected with and expressing genes encoding HLA-G and human beta2-microglobulin.
Specificity:	The antibody 01G recognizes membrane-bound form of HLA-G (full-length HLA-G1), but not soluble forms. HLA-G belongs to the MHC Class I molecules (MHC Class Ib; nonclassical) and it is expressed on the surface of trophoblast cells.
Formulation:	PBS, pH 7.4 with 15 mM sodium azide as preservative State: Purified State: Liquid purified IgG fraction (> 95% pure by SDS-PAGE)
Concentration:	lot specific
Purification:	Protein A affinity chromatography
Conjugation:	Unconjugated
Storage:	Store undiluted at 2-8°C. <b>DO NOT FREEZE!</b>
Stability:	Shelf life: one year from despatch.
Gene Name:	major histocompatibility complex, class I, G



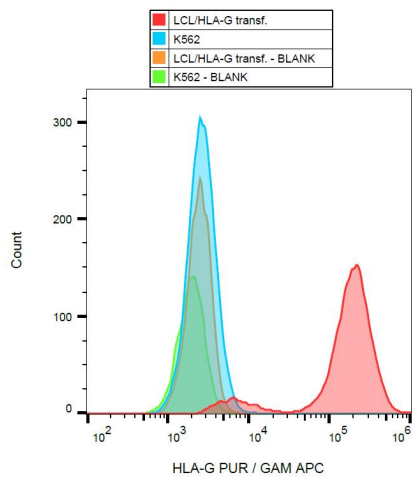
[View online »](#)

Database Link: [Entrez Gene 3135 Human P17693](#)

**Background:** HLA G belongs to the HLA class I heavy chain paralogues. It is a heterodimer consisting of a heavy chain (with a1, a2, a3 domains) and a light chain (beta 2 microglobulin). Alternate splicing provides both soluble and membrane bound forms of HLA G, with two soluble isoforms and four membrane bound isoforms. HLA G may be part of the fetal protection system and is expressed on fetal derived placental cells.

**Synonyms:** HLA-6.0, HLAG, MHC class I antigen G

### Product images:



Surface staining of HLA-G transfected LCL cells with anti-HLA-G (01G) purified, GAM-APC.