

## Product datasheet for **AM03083PU-N**

### HLAG (HLA-G) Mouse Monoclonal Antibody [Clone ID: MEM-G/2]

#### Product data:

Product Type:	Primary Antibodies
Clone Name:	MEM-G/2
Applications:	IHC, WB
Recommended Dilution:	Immunohistochemistry (paraffin sections). Western blot: Recommended dilution 1-2 µg/ml.
Reactivity:	Human
Host:	Mouse
Isotype:	IgG1
Clonality:	Monoclonal
Immunogen:	Bacterially expressed recombinant HLA-G heavy chain (denaturated).
Specificity:	The antibody MEM-G/2 recognizes the free heavy chain of all the HLA-G isoforms. HLA-G belongs to the MHC Class I molecules (MHC Class Ib; nonclassical) and it is expressed on the surface of trophoblast cells.
Formulation:	PBS, pH 7.4 with 15 mM sodium azide as preservative State: Purified State: Liquid purified IgG fraction (> 95% pure by SDS-PAGE)
Concentration:	lot specific
Purification:	Protein A affinity chromatography
Conjugation:	Unconjugated
Storage:	Store the antibody undiluted at 2-8°C for one month or (in aliquots) at -20°C for longer. Avoid repeated freezing and thawing.
Stability:	Shelf life: one year from despatch.
Gene Name:	major histocompatibility complex, class I, G
Database Link:	<a href="#">Entrez Gene 3135 Human P17693</a>



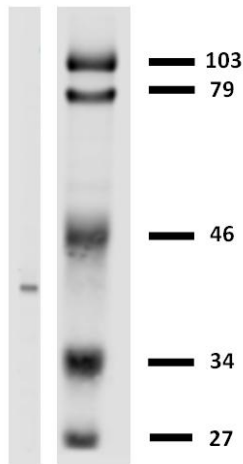
[View online »](#)

**Background:**

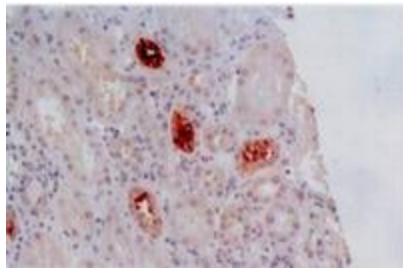
HLA G belongs to the HLA class I heavy chain paralogues. It is a heterodimer consisting of a heavy chain (with a1, a2, a3 domains) and a light chain (beta 2 microglobulin). Alternate splicing provides both soluble and membrane bound forms of HLA G, with two soluble isoforms and four membrane bound isoforms. HLA G may be part of the fetal protection system and is expressed on fetal derived placental cells.

**Synonyms:**

HLA-6.0, HLAG, MHC class I antigen G

**Product images:**


Western blotting analysis of HLA-G in LCL-HLA-G transfectants using anti-HLA-G (MEM-G/2).



Immunohistochemistry staining of kidney allograft biopsy (paraffin-embedded sections) with anti-human HLA-G (MEM-G/2).