

Product datasheet for **AM03082PU-N**

HLAG (HLA-G) (C-term) Mouse Monoclonal Antibody [Clone ID: 2A12]

Product data:

Product Type:	Primary Antibodies
Clone Name:	2A12
Applications:	FC, IF, IHC, WB
Recommended Dilution:	Flow Cytometry: excellent for intracellular staining; 1-10 µg/ml. Western Blot. Immunohistochemistry (paraffin and frozen sections).
Reactivity:	Human
Host:	Mouse
Isotype:	IgG1
Clonality:	Monoclonal
Immunogen:	C-terminal amino acid sequence (22-mer) of soluble HLA-G5 and HLA-G6 proteins coupled to ovalbumin
Specificity:	The antibody 2A12 allows to discriminate between soluble HLA-G protein yielded by shedding from membrane-bound HLA-G forms that do not contain the intron 4-encoded epitope and soluble HLA-G5/HLA-G6 produced from intron 4-retaining alternatively spliced mRNAs. HLA-G belongs to the MHC Class I molecules (MHC Class Ib; nonclassical) and it is expressed on the surface of trophoblast cells.
Formulation:	PBS, pH 7.4 with 15 mM sodium azide as preservative State: Purified State: Liquid purified IgG fraction (> 95% pure by SDS-PAGE)
Concentration:	lot specific
Purification:	Purified by sequential steps of physicochemical fractionation (differential precipitation and solid-phase chromatography methods).
Conjugation:	Unconjugated
Storage:	Store the antibody undiluted at 2-8°C for one month or (in aliquots) at -20°C for longer. Avoid repeated freezing and thawing.
Stability:	Shelf life: one year from despatch.
Gene Name:	major histocompatibility complex, class I, G



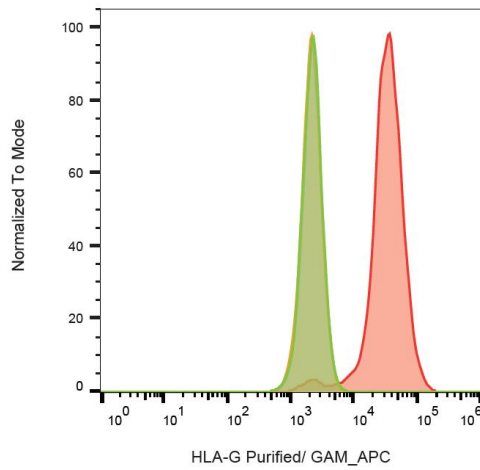
[View online »](#)

Database Link: [Entrez Gene 3135 Human P17693](#)

Background: HLA G belongs to the HLA class I heavy chain paralogues. It is a heterodimer consisting of a heavy chain (with a1, a2, a3 domains) and a light chain (beta 2 microglobulin). Alternate splicing provides both soluble and membrane bound forms of HLA G, with two soluble isoforms and four membrane bound isoforms. HLA G may be part of the fetal protection system and is expressed on fetal derived placental cells.

Synonyms: HLA-6.0, HLAG, MHC class I antigen G

Product images:



Surface staining of HLA-G (on transfected cells) with anti-HLA-G (2A12) purified, GAM-APC.