

## Product datasheet for **AM03081PU-N**

### HLA-G (HLA-G) (C-term) Mouse Monoclonal Antibody [Clone ID: 5A6G7]

#### Product data:

Product Type:	Primary Antibodies
Clone Name:	5A6G7
Applications:	ELISA, FC, IF, IHC, WB
Recommended Dilution:	<b>Western blot (Reducing Conditions):</b> 12% AA SDS-PAGE. <i>Positive Control:</i> JEG-3 cell lysate. <b>Flow Cytometry:</b> Recommended dilution: 1-4 µg/ml. Intracellular staining. <b>Immunohistochemistry on Paraffin and Frozen Sections:</b> 10-20 µg/ml. <i>Positive tissue:</i> placenta tissue. <b>Immunocytochemistry.</b> <b>ELISA:</b> The antibody 5A6G7 has been tested as the capture antibody in a sandwich ELISA for analysis of soluble HLA-G in combination with antibody AM03005BT-N. <i>Positive Control:</i> HeLa/HLA-G5 transfectants cell lysate. HeLa/HLA-G5 cell supernatant. <i>Negative Control:</i> HeLa cell lysate.
Reactivity:	Human
Host:	Mouse
Isotype:	IgG1
Clonality:	Monoclonal
Immunogen:	C-terminal amino acid sequence (22-mer) of soluble HLA-G5 and HLA-G6 proteins coupled to ovalbumin
Specificity:	The antibody 5A6G7 allows to discriminate between soluble HLA-G protein yielded by shedding from membrane-bound HLA-G forms that do not contain the intron 4-encoded epitope and soluble HLA-G5/HLA-G6 produced from intron 4-retaining alternatively spliced mRNAs. HLA-G belongs to the MHC Class I molecules (MHC Class Ib; nonclassical) and it is expressed on the surface of trophoblast cells.
Formulation:	PBS, pH 7.4 with 15 mM Sodium Azide as preservative State: Purified State: Liquid purified IgG fraction (> 95% pure by SDS-PAGE)
Concentration:	lot specific



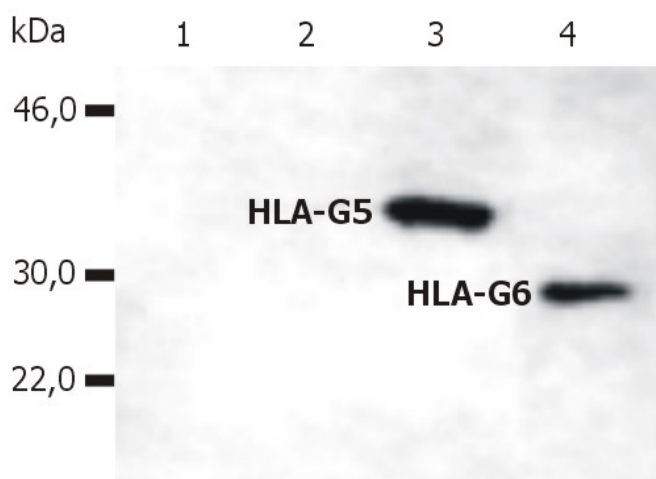
[View online »](#)

Purification:	Protein A chromatography
Conjugation:	Unconjugated
Storage:	Store undiluted at 2-8°C. <b>DO NOT FREEZE!</b>
Stability:	Shelf life: one year from despatch.
Gene Name:	major histocompatibility complex, class I, G
Database Link:	<a href="#">Entrez Gene 3135 Human P17693</a>

**Background:** HLA G belongs to the HLA class I heavy chain paralogues. It is a heterodimer consisting of a heavy chain (with a1, a2, a3 domains) and a light chain (beta 2 microglobulin). Alternate splicing provides both soluble and membrane bound forms of HLA G, with two soluble isoforms and four membrane bound isoforms. HLA G may be part of the fetal protection system and is expressed on fetal derived placental cells.

**Synonyms:** HLA-6.0, HLAG, MHC class I antigen G

### Product images:



Western Blotting analysis of whole cell lysate of HLA-G stable transfectants (various splice variants) using anti-human HLA-G (5A6G7). Lane 1: M8 cell line transfected with empty vector; Lane 2: M8 cell line transfected with HLA-G1; Lane 3: M8 cell line transfected with HLA-G5; Lane 4: M8 cell line transfected with HLA-G6