

## Product datasheet for **AM03078PU-N**

### Clusterin (CLU) Mouse Monoclonal Antibody [Clone ID: Hs-3]

#### Product data:

Product Type:	Primary Antibodies
Clone Name:	Hs-3
Applications:	ELISA, IF, IHC, WB
Recommended Dilution:	<b>ELISA.</b> <b>Western blot:</b> 1/ $\mu\text{g/ml}$ <i>Positive Material:</i> seminal plasma <b>Immunocytochemistry.</b> <b>Immunohistochemistry on Paraffin Sections:</b> 10 $\mu\text{g/ml}$ . <i>Positive Tissue:</i> Sertoli cells.
Reactivity:	Human
Host:	Mouse
Isotype:	IgG1
Clonality:	Monoclonal
Immunogen:	Freshly ejaculated human sperms were washed in PBS and extracted in 3% acetic acid, 10% glycerol, 30 mM benzaminidine. The acid extract was dialyzed against 0.2% acetic acid and subsequently used for immunization.
Specificity:	Recognizes Apolipoprotein J (Apo J).
Formulation:	PBS, pH~7.4 with 15 mM Sodium Azide as preservative State: Aff - Purified State: Liquid purified IgG fraction (> 95% pure by SDS-PAGE)
Concentration:	lot specific
Purification:	Affinity Chromatography on Protein A
Conjugation:	Unconjugated
Storage:	Store the antibody undiluted at 2-8°C for one month or (in aliquots) at -20°C for longer. Avoid repeated freezing and thawing.
Stability:	Shelf life: one year from despatch.
Gene Name:	clusterin



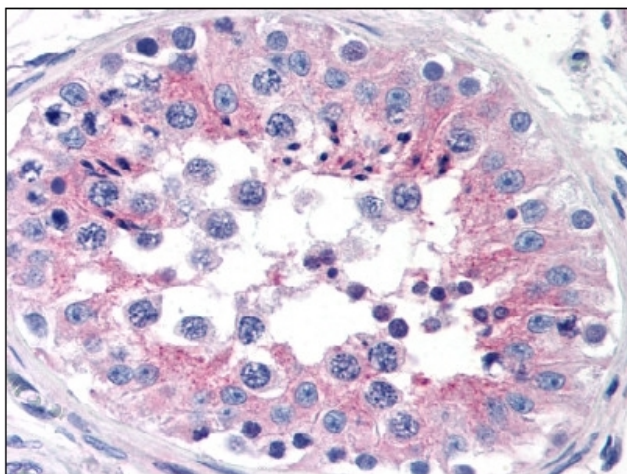
[View online »](#)

**Database Link:** [Entrez Gene 1191 Human P10909](#)

**Background:** Clusterin (APO J, SGP-2, TRPM-2, SP-40, pADHC-9, CLJ, T64, GP III, XIP8) is a 75-80 kD disulfide-linked heterodimeric protein containing about 30% of N-linked carbohydrate rich in sialic acid but truncated forms targeted to the nucleus have also been identified. It is a conserved secreted glycoprotein expressed by a wide range of tissues and being implicated in many physiological processes, including e.g. lipid transportation, complement inhibition, tissue remodeling, membrane recycling, or clearance of cellular debris. It is nearly ubiquitously expressed in most mammalian tissues and can be found in plasma, milk, urine, cerebrospinal fluid and semen. Clusterin is able to bind and form complexes with numerous partners (immunoglobulins, lipids, heparin, bacteria, complement components, paraoxonase, beta amyloid, leptin etc.) and is expressed in many pathological and clinically relevant situations including cancer, organ regeneration, infection, Alzheimer disease, retinitis pigmentosa, myocardial infarction, renal tubular damage, autoimmunity and others. A genuine function of clusterin is still enigmatic.

**Synonyms:** Clusterin, APOJ, CLI, KUB1, AAG4, NA1/NA2, SP-40,40

**Product images:**



Apolipoprotein J antibody staining of Formalin-Fixed Paraffin-Embedded Human Testis at 10 ug/ml.