

Product datasheet for **AM03077PU-N**

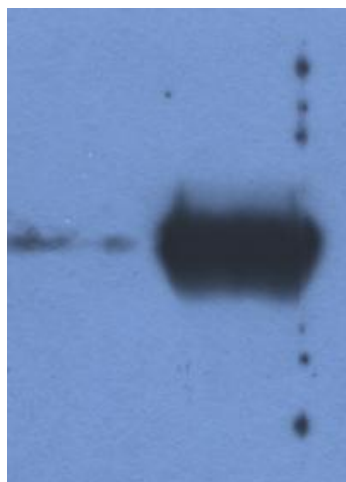
Bovine IgG (light chain) Mouse Monoclonal Antibody [Clone ID: IVA285-1]

Product data:

Product Type:	Secondary Antibodies
Product Name:	Bovine IgG (light chain) Mouse Monoclonal Antibody [Clone ID: IVA285-1]
Clone Name:	IVA285-1
Applications:	FC, IHC, WB
Recommended Dilution:	Western Blotting (<i>Reducing Conditions</i>): 0.5-1 µg/ml, overnight in 4°C. SDS-PAGE (12% separating gel). Positive Control and Sample Preparation: BS (Bovine Serum), dilution 1/50 in Laemmli reducing buffer, boiled in water bath for 3 min. Strongly reacts with Bovine IgG light chains, weakly reacts with IgM. Flow Cytometry. Immunohistochemistry on Frozen Sections.
Reactivity:	Bovine, Sheep
Host:	Mouse
Immunogen:	Fraction of Bovine immunoglobulin
Isotype:	IgG1
Formulation:	PBS, pH 7.4 State: Purified State: Liquid purified IgG fraction (> 95% pure by SDS-PAGE) Preservative: 15 mM Sodium Azide
Concentration:	lot specific
Purification:	Affinity Chromatography on Protein A
Conjugation:	Unconjugated
Storage:	Store undiluted at 2-8°C. DO NOT FREEZE!



[View online »](#)

Product images:

Detection of IgG light chain in reduced samples of Fetal Calf Serum (left lane) and Bovine Serum (right lane) by antibody IVA285-1. This antibody is a suitable tool for in-house quality controls of Fetal Calf Serum (Hybridoma Cell Culture grade).