

Product datasheet for **AM03073FC-N**

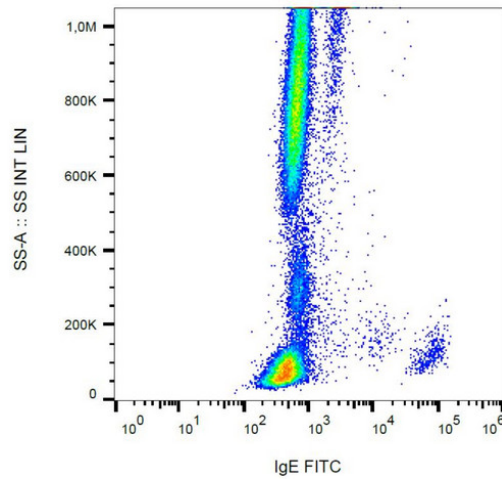
Human IgE Mouse Monoclonal Antibody [Clone ID: 4H10]

Product data:

Product Type:	Secondary Antibodies
Product Name:	Human IgE Mouse Monoclonal Antibody [Clone ID: 4H10]
Clone Name:	4H10
Applications:	FC
Recommended Dilution:	Flow cytometry: 2-5 µg/ml.
Reactivity:	Human
Host:	Mouse
Immunogen:	Purified human IgE
Isotype:	IgG1
Formulation:	Phosphate buffered saline (PBS) containing 15 mM sodium azide and 0.2% (w/v) high-grade protease free Bovine Serum Albumin (BSA) as a stabilizing agent Label: FITC State: Liquid purified Ig fraction Label: Conjugated with Fluorescein isothiocyanate under optimum conditions. The reagent is free of unconjugated
Concentration:	lot specific
Conjugation:	FITC
Storage:	Store undiluted 2-8°C. DO NOT FREEZE! This product is photosensitive and should be protected from light.



[View online »](#)

Product images:

Surface staining of IgE on human peripheral blood cells with anti-IgE (4H10) FITC.