

Product datasheet for **AM03064RP-N**

CD21 (CR2) Mouse Monoclonal Antibody [Clone ID: LT21]

Product data:

| | |
|-----------------------|--|
| Product Type: | Primary Antibodies |
| Clone Name: | LT21 |
| Applications: | FC |
| Recommended Dilution: | Suitable for Flow Cytometry analysis of human blood cells using 20 µl reagent / 100 µl of whole blood or 10 ⁶ cells in a suspension. The content of a vial (2 ml) is sufficient for 100 tests. |
| Reactivity: | Bovine, Canine, Human, Porcine |
| Host: | Mouse |
| Isotype: | IgG1 |
| Clonality: | Monoclonal |
| Immunogen: | IM9 human B-lymphoblastoid cell line |
| Specificity: | The antibody LT21 reacts with CD21 (CR2), a 145 kDa transmembrane glycoprotein (complement C3d receptor - C3dR) expressed on B lymphocytes, follicular dendritic cells, some epithelial cells and a subsets of T lymphocytes. It is not expressed on immature B cells. |
| Formulation: | PBS containing 15 mM sodium azide as preservative Label: PE State: Liquid purified IgG fraction Label: Conjugated with R-Phycoerythrin under optimum conditions |
| Purification: | Size-exclusion chromatography |
| Conjugation: | PE |
| Storage: | Store the antibody in the dark at 2-8°C. Do Not Freeze! Avoid prolonged exposure to light. |
| Stability: | Shelf life: one year from despatch. |
| Gene Name: | complement component 3d receptor 2 |
| Database Link: | Entrez Gene 1380 Human P20023 |



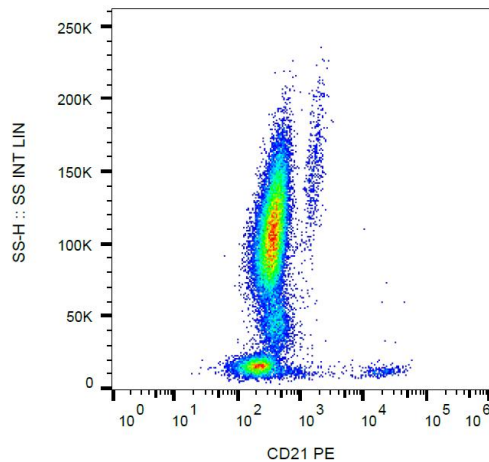
[View online »](#)

Background:

CD21 (complement receptor 2, CR2) binds C3 complement fragments, especially its breakdown fragments, which remain covalently attached to complement activating surfaces or antigen. CD21 has important roles in uptake and retention of immunocomplexes, survival of memory B cells and in development and maintenance of the humoral response to T-dependent antigens. CD21 also serves as a key receptor for Epstein-Barr virus binding and is involved in targeting prions to follicular dendritic cells and expediting neuroinvasion following peripheral exposure to prions. A soluble form of the CD21 (sCD21) is shed from the lymphocyte surface and retains its ability to bind respective ligands.

Synonyms:

Complement receptor type 2, CR2, C3DR, C3d receptor, EBV Receptor, Dendritic Cell Marker

Product images:

Surface staining of human peripheral blood leukocytes with anti-CD21 (LT21) PE.