

Product datasheet for **AM03064FC-N**

CD21 (CR2) Mouse Monoclonal Antibody [Clone ID: LT21]

Product data:

Product Type:	Primary Antibodies
Clone Name:	LT21
Applications:	FC
Recommended Dilution:	Flow Cytometry analysis of Human blood cells using 20 µl reagent / 100 µl of whole blood or 10 ⁶ cells in a suspension.
Reactivity:	Bovine, Canine, Human, Porcine
Host:	Mouse
Isotype:	IgG1
Clonality:	Monoclonal
Immunogen:	IM9 human B-lymphoblastoid cell line
Specificity:	The antibody <i>LT21</i> reacts with CD21 (CR2), a 145 kDa transmembrane glycoprotein (complement C3d receptor - C3dR) expressed on B lymphocytes, follicular dendritic cells, some epithelial cells and a subsets of T lymphocytes. It is not expressed on immature B cells.
Formulation:	PBS Label: FITC State: Liquid purified IgG fraction Preservative: 15 mM Sodium Azide Label: Conjugated with Fluorescein isothiocyanate under optimum conditions.
Conjugation:	FITC
Storage:	Store undiluted at 2-8°C. DO NOT FREEZE! This product is photosensitive and should be protected from light.
Stability:	Shelf life: one year from despatch.
Gene Name:	complement component 3d receptor 2
Database Link:	Entrez Gene 1380 Human P20023



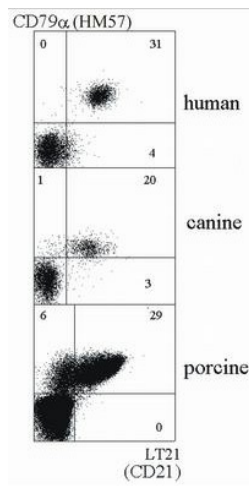
[View online »](#)

Background:

CD21 (complement receptor 2, CR2) binds C3 complement fragments, especially its breakdown fragments, which remain covalently attached to complement activating surfaces or antigen. CD21 has important roles in uptake and retention of immunocomplexes, survival of memory B cells and in development and maintenance of the humoral response to T-dependent antigens. CD21 also serves as a key receptor for Epstein-Barr virus binding and is involved in targeting prions to follicular dendritic cells and expediting neuroinvasion following peripheral exposure to prions. A soluble form of the CD21 (sCD21) is shed from the lymphocyte surface and retains its ability to bind respective ligands.

Synonyms:

Complement receptor type 2, CR2, C3DR, C3d receptor, EBV Receptor, Dendritic Cell Marker

Product images:

Double staining of human, canine and porcine B lymphocytes with anti-CD79a (HM57) and anti-CD21 (LT21) antibody