

Product datasheet for **AM03062PU-N**

CD300 antigen (CD300A) Mouse Monoclonal Antibody [Clone ID: MEM-260]

Product data:

Product Type:	Primary Antibodies
Clone Name:	MEM-260
Applications:	FC, WB
Recommended Dilution:	Flow Cytometry: 2 µg/ml. Western Blot (Non-reducing conditions). Positive material: HPB cell line; Negative material: JURKAT human cell line, RAJI human cell line. Sample preparation: Resuspend approx. 50 mil. cells in 1 ml cold Lysis buffer (1% laurylmaltoside in 20 mM Tris/Cl, 100 mM NaCl pH 8.2, 50 mM NaF including Protease inhibitor Cocktail). Incubate 60 min on ice. Centrifuge to remove cell debris. Mix lysate with non-reducing SDS-PAGE sample buffer.
Reactivity:	Human
Host:	Mouse
Isotype:	IgG1
Clonality:	Monoclonal
Immunogen:	HPB human acute lymphoid leukemia cell line
Specificity:	This antibody reacts with CD300a, a 60 kDa leukocyte transmembrane glycoprotein expressed on human granulocytes, monocytes, neutrophils, NK cells, mast cells and dendritic cells, 25% of circulating T cells and 15% of circulating B cells.
Formulation:	PBS, pH 7.4 containing 15 mM sodium azide as preservative State: Purified State: Liquid purified IgG fraction (> 95% pure by SDS-PAGE)
Concentration:	lot specific
Purification:	Protein A affinity chromatography
Conjugation:	Unconjugated
Storage:	Store undiluted at 2-8°C. DO NOT FREEZE!
Stability:	Shelf life: one year from despatch.
Gene Name:	CD300a molecule



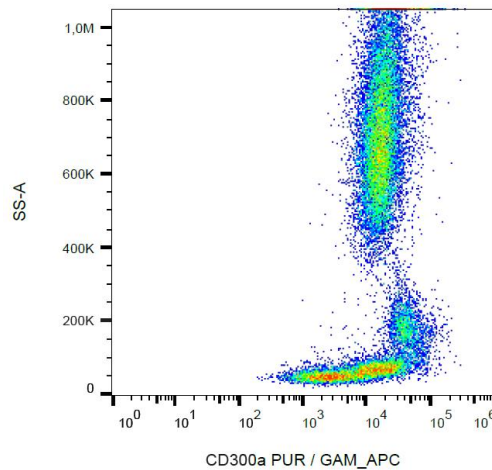
[View online »](#)

Database Link: [Entrez Gene 11314 Human Q9UGN4](#)

Background: CD300a (CMRF-35H, IRp60) is a non-MHC-specific inhibitory receptor of immunoglobulin superfamily, which contains three immunoreceptor tyrosine-based inhibitory motifs (ITIMs) that associate with SH2-containing phosphatases SHP-1 and SHP-2. CD300a is expressed on many cell types including T cells, NK cells, neutrophils, eosinophils or mast cells. Its triggering inhibits activating signals such as those of IL5, GM-CSF or eotaxin, as well as suppresses mast cell degranulation or NK cell cytotoxic activity.

Synonyms: CLM-8, CMRF35-H, CMRF35-H9, CMRF-35-H9, IRC1/IRC2, IRp60

Product images:



Surface staining of human peripheral blood cells with anti-CD300a (MEM-260) purified, GAM-APC.