

Product datasheet for **AM03059RP-N**

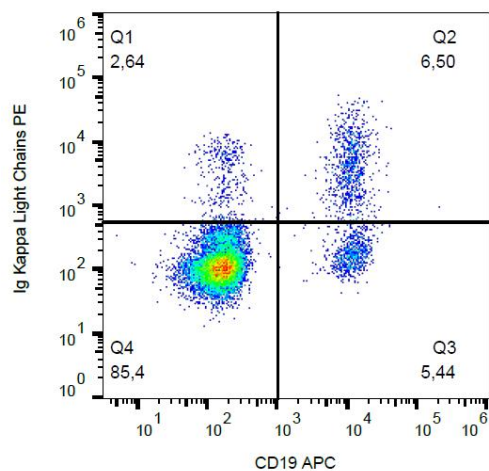
Human Kappa Light Chain Mouse Monoclonal Antibody [Clone ID: A8B5]

Product data:

Product Type:	Primary Antibodies
Clone Name:	A8B5
Applications:	FC
Recommended Dilution:	Suitable for Flow Cytometry analysis of human blood cells using 20 µl reagent / 100 µl of whole blood or 10 ⁶ cells in a suspension. The content of a vial (2 ml) is sufficient for 100 tests.
Reactivity:	Human
Host:	Mouse
Isotype:	IgG1
Clonality:	Monoclonal
Specificity:	This antibody reacts with HUman kappa light chains (22.5 kDa) of immunoglobulins. Negative Species: Hamster, Sheep, Goat, Rabbit, Guinea pig.
Formulation:	Phosphate buffered saline (PBS) solution containing 15mM sodium azide Label: PE State: Liquid purified Ig fraction Label: Conjugated to R-Phycoerythrin under optimum conditions
Purification:	Size-exclusion chromatography
Conjugation:	PE
Storage:	Store the antibody in the dark at 2-8°C. Do Not Freeze! Avoid prolonged exposure to light.
Stability:	Shelf life: One year from despatch.
Background:	Immunoglobulin classes share the same basic four polypeptide chain structure of two heavy chains (five heavy chains types) and two light chains (kappa, lambda; both having a molecular weight of 22.5kDa). Kappa and lambda consist of a variable region and a constant region and can easily be differentiated by the antigenic properties of the constant region. The ratio of kappa to lambda is 70:30.



[View online »](#)

Product images:

Surface staining of immunoglobulin kappa light chains in human peripheral blood with anti-kappa light chains (A8B5) PE.