

Product datasheet for **AM03059PU-N**

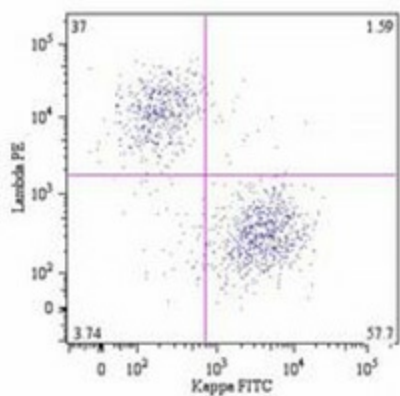
Human Kappa Light Chain Mouse Monoclonal Antibody [Clone ID: A8B5]

Product data:

Product Type:	Primary Antibodies
Clone Name:	A8B5
Applications:	ELISA, FC, IHC
Recommended Dilution:	Flow cytometry. <i>Positive control:</i> Daudi human cell line. Immunohistochemistry on frozen and paraffin sections. ELISA.
Reactivity:	Human
Host:	Mouse
Isotype:	IgG1
Clonality:	Monoclonal
Specificity:	This antibody reacts with kappa light chains (22.5 kDa) of immunoglobulins.
Formulation:	Phosphate buffered saline (PBS) with 15 mM sodium azide, approx. pH 7.4 State: Purified State: Liquid Ig fraction
Concentration:	lot specific
Purification:	Protein A affinity chromatography
Conjugation:	Unconjugated
Storage:	Store undiluted at 2-8°C. DO NOT FREEZE!
Stability:	Shelf life: one year from despatch.
Background:	Immunoglobulin classes share the same basic four polypeptide chain structure of two heavy chains (five heavy chains types) and two light chains (kappa, lambda; both having a molecular weight of 22.5kDa). Kappa and lambda consist of a variable region and a constant region and can easily be differentiated by the antigenic properties of the constant region. The ratio of kappa to lambda is 70:30.



[View online »](#)

Product images:

B lymphocytes (CD19+) in a dot-plot Lambda PE vs. Kappa FITC. Kappa light chain detected by A8B5 antibody and lambda light chain by 4C2 antibody, CD19 by LT19 antibody.