

Product datasheet for **AM03059FC-N**

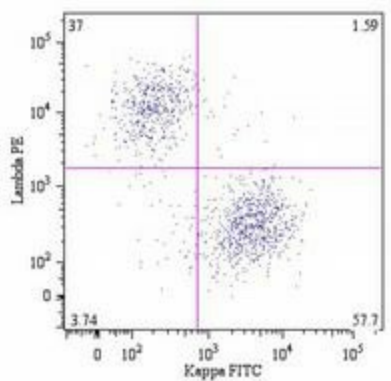
Human Kappa Light Chain Mouse Monoclonal Antibody [Clone ID: A8B5]

Product data:

Product Type:	Primary Antibodies
Clone Name:	A8B5
Applications:	FC
Recommended Dilution:	Flow Cytometry analysis of Human blood cells using 20 µl reagent/100 µl of whole blood or 10 ⁶ cells in a suspension. The content of a vial (2 ml) is sufficient for 100 tests.
Reactivity:	Human
Host:	Mouse
Isotype:	IgG1
Clonality:	Monoclonal
Specificity:	The antibody A8B5 reacts with Human kappa light chains (22.5 kDa) of immunoglobulins. Negative Species: Hamster, Sheep, Goat, Rabbit and Guinea pig.
Formulation:	Phosphate buffered saline (PBS) solution containing 15mM sodium azide Label: FITC State: Liquid purified Ig fraction Label: Conjugated with Fluorescein isothiocyanate under optimum conditions. The reagent is free of unconjugated and adjusted for direct use.
Conjugation:	FITC
Storage:	Store the antibody in the dark at 2-8°C. DO NOT FREEZE! Avoid prolonged exposure to light.
Stability:	Shelf life: One year from despatch.
Background:	Immunoglobulin classes share the same basic four polypeptide chain structure of two heavy chains (five heavy chains types) and two light chains (kappa, lambda; both having a molecular weight of 22.5kDa). Kappa and lambda consist of a variable region and a constant region and can easily be differentiated by the antigenic properties of the constant region. The ratio of kappa to lambda is 70:30.



[View online »](#)

Product images:

B lymphocytes (CD19+) in a dot-plot Lambda PE vs. Kappa FITC. Kappa light chain detected by A8B5 antibody and lambda light chain by 4C2 antibody, CD19 by LT19 antibody.