

## Product datasheet for **AM03025PU-N**

### LAMP1 Mouse Monoclonal Antibody [Clone ID: B-T47]

#### Product data:

Product Type:	Primary Antibodies
Clone Name:	B-T47
Applications:	FC, IF, WB
Recommended Dilution:	<b>Western Blot:</b> 2 µg/ml. <b>Immunofluorescence.</b> <b>Flow Cytometry:</b> Use 10 µl to label 10 <sup>6</sup> cells or 100 µl of whole blood.
Reactivity:	Human
Host:	Mouse
Isotype:	IgG1
Clonality:	Monoclonal
Immunogen:	U937 cell line
Specificity:	This antibody recognizes CD107a, a 100-120 kDa protein.
Formulation:	PBS State: Purified State: Liquid purified Ig fraction Stabilizer: 1% BSA Preservative: 0.09% Sodium Azide
Concentration:	lot specific
Purification:	Ion Exchange Chromatography
Conjugation:	Unconjugated
Storage:	Store the antibody undiluted at 2-8°C. <b>DO NOT FREEZE!</b>
Stability:	Shelf life: one year from despatch.
Gene Name:	lysosomal associated membrane protein 1
Database Link:	<a href="#">Entrez Gene 3916 Human P11279</a>
Synonyms:	LAMP-1, LAMPA, LGP120

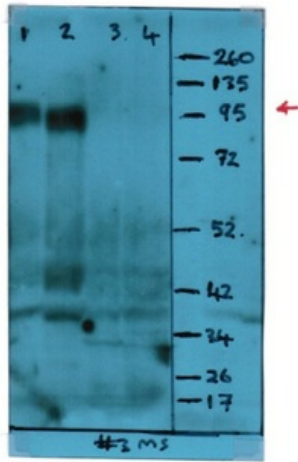


[View online »](#)

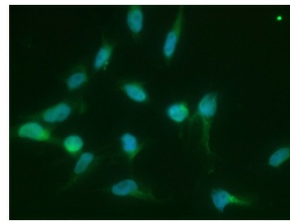
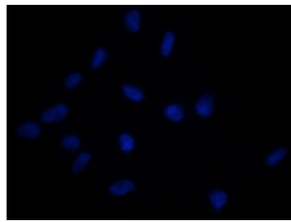
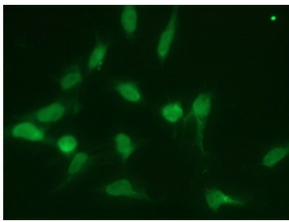
**Protein Families:** ES Cell Differentiation/IPS, Transmembrane

**Protein Pathways:** Lysosome

**Product images:**



Western Blot analysis using CD107a / LAMP1 Antibody (Clone B-T47) at 2 ug/ml in 1 mg/ml lysate, HeLa 10 ug (Lane 1+2), Raw 20ug (Lane 3+4) lysate, blocking buffer (Blotto; 5% dry milk powder in TBST). [R1253HRP] anti-Mouse IgG (H+L)-HRP as secondary antibody.



DAPI staining

merge

CD107a / LAMP1 Antibody (Clone B-T47) on HeLa cells at 5 ug/ml (Left), [R1404F] with F(ab)<sub>2</sub> anti Mouse IgG (H+L)-FITC conjugated secondary antibody (1/100). Cells were fixed in 1% PFA, permeabilized in 0.25% Triton X 100 in PBS, blocked in 1% BSA in PBS.