

Product datasheet for **AM03022PU-N**

Syndecan 1 (SDC1) Mouse Monoclonal Antibody [Clone ID: B-A38]

Product data:

| | |
|-----------------------|---|
| Product Type: | Primary Antibodies |
| Clone Name: | B-A38 |
| Applications: | FC, IHC |
| Recommended Dilution: | Flow Cytometry: 3-5 µg/ml. Immunohistochemistry. |
| Reactivity: | Human |
| Host: | Mouse |
| Isotype: | IgG1 |
| Clonality: | Monoclonal |
| Immunogen: | U266 Human peripheral blood myeloma cell line |
| Specificity: | The antibody <i>B-A38</i> recognizes CD138 (syndecan-1), a 65-70 kDa heparan sulfate proteoglycan expressed mainly in the epidermis and plasma cells, but also in growth factor-stimulated lymphocytes. |
| Formulation: | Azide Free PBS, pH 7.4, 0.2 µm filter sterilized State: Azide Free State: Liquid purified Ig fraction (> 95% pure by SDS-PAGE) |
| Concentration: | lot specific |
| Purification: | Protein A Chromatography |
| Conjugation: | Unconjugated |
| Storage: | Store undiluted at 2-8°C. DO NOT FREEZE! |
| Stability: | Shelf life: one year from despatch. |
| Gene Name: | syndecan 1 |
| Database Link: | Entrez Gene 6382 Human P18827 |



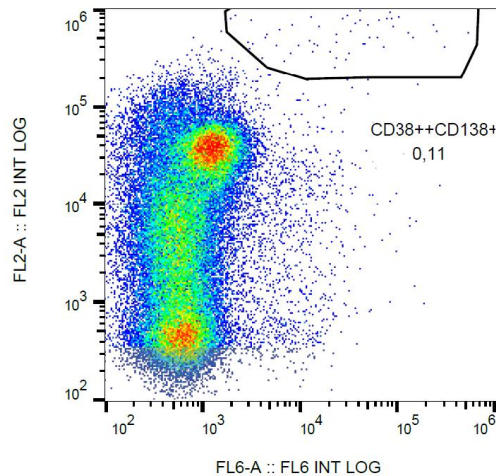
[View online »](#)

Background:

CD138 (syndecan-1) is a transmembrane proteoglycan that can bind a variety of cytokines and modulate their activity, as well as the activity of extracellular matrix components and influence many developmental processes. CD138 is expressed mainly in differentiating keratinocytes and is transiently upregulated in all layers of the epidermis upon tissue injury. It is also highly expressed on plasma cells and can be detected even on fibroblasts, vascular smooth muscle cells and endothelial cells. Up-regulation and down-regulation of CD138 on the cell surface often correlates with the gain of cancerous characteristics. Serum levels of the shedded soluble sCD138 are used as a prognostic factor of cancerogenesis.

Synonyms:

SYND1, SDC1, SDC

Product images:

Surface staining of CD138 in human peripheral blood lymphocytes with anti-CD138 azide free / GAM-APC.