

Product datasheet for **AM03022PP-N**

Syndecan 1 (SDC1) Mouse Monoclonal Antibody [Clone ID: B-A38]

Product data:

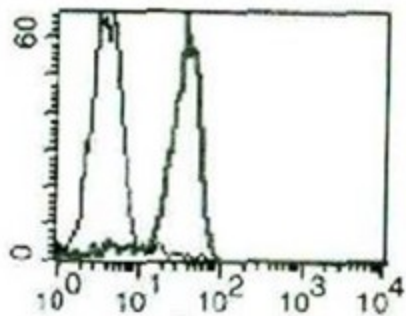
Product Type:	Primary Antibodies
Clone Name:	B-A38
Applications:	FC
Recommended Dilution:	Flow Cytometry: Use 10 µl to label 0.5x10 ⁶ cells or 50 µl of whole blood.
Reactivity:	Human
Host:	Mouse
Isotype:	IgG1
Clonality:	Monoclonal
Immunogen:	U266 cell line.
Specificity:	This antibody recognises the Syndecan-1, the heparan sulfate proteoglycan, a 65-70 kDa protein.
Formulation:	Phosphate-buffered saline Label: PerCP State: Liquid purified IgG fraction Stabilizer: 1% BSA Preservative: 0.09% Sodium Azide Label: Peridinin-chlorophyll-protein complex
Purification:	Ion Exchange Chromatography
Conjugation:	PerCP
Storage:	Store the antibody undiluted at 2-8°C. DO NOT FREEZE!
Stability:	Shelf life: one year from despatch.
Gene Name:	syndecan 1
Database Link:	Entrez Gene 6382 Human P18827
Synonyms:	SYND1, SDC1, SDC
Protein Families:	Druggable Genome, ES Cell Differentiation/IPS, Transmembrane



[View online »](#)

Protein Pathways: Cell adhesion molecules (CAMs), ECM-receptor interaction

Product images:



A typical staining pattern with B-A38 monoclonal antibody of RPMI 8226 cell line