

Product datasheet for **AM03022AF-N**

Syndecan 1 (SDC1) Mouse Monoclonal Antibody [Clone ID: B-A38]

Product data:

Product Type:	Primary Antibodies
Clone Name:	B-A38
Applications:	FC, IHC
Recommended Dilution:	Flow Cytometry. Immunohistochemistry (1/50).
Reactivity:	Human
Host:	Mouse
Isotype:	IgG1
Clonality:	Monoclonal
Immunogen:	U266 cell line. Myeloma X63/AG.8653 x Balb/c spleen cells.
Specificity:	The antibody <i>B-A38</i> recognizes CD138 (Syndecan-1), a 65-70 kDa heparan sulfate proteoglycan expressed mainly in the epidermis and plasma cells, but also in growth factor-stimulated lymphocytes.
Formulation:	Azide Free PBS, pH 7.4, 0.2 µm filter sterilized State: Azide Free State: Liquid purified Ig fraction Preservative: None
Concentration:	lot specific
Purification:	Ion Exchange Chromatography
Conjugation:	Unconjugated
Storage:	Store undiluted at 2-8°C for one month or (in aliquots) at -20°C for longer. Avoid repeated freezing and thawing.
Stability:	Shelf life: one year from despatch.
Gene Name:	syndecan 1
Database Link:	Entrez Gene 6382 Human P18827



[View online »](#)

Background:

CD138 (syndecan-1) is a transmembrane proteoglycan that can bind a variety of cytokines and modulate their activity, as well as the activity of extracellular matrix components and influence many developmental processes. CD138 is expressed mainly in differentiating keratinocytes and is transiently upregulated in all layers of the epidermis upon tissue injury. It is also highly expressed on plasma cells and can be detected even on fibroblasts, vascular smooth muscle cells and endothelial cells. Up-regulation and down-regulation of CD138 on the cell surface often correlates with the gain of cancerous characteristics. Serum levels of the shedded soluble sCD138 are used as a prognostic factor of cancerogenesis.

Synonyms:

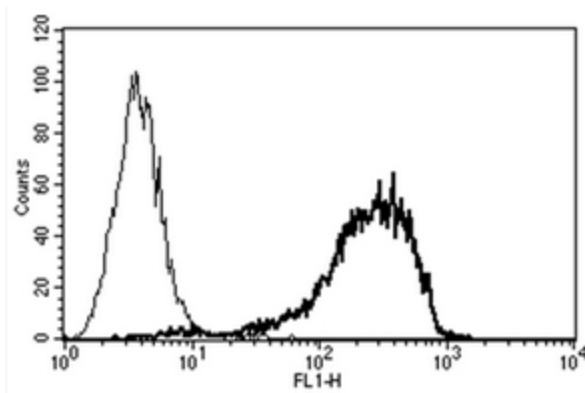
SYND1, SDC1, SDC

Protein Families:

Druggable Genome, ES Cell Differentiation/IPS, Transmembrane

Protein Pathways:

Cell adhesion molecules (CAMs), ECM-receptor interaction

Product images:

Flow cytometry: A typical staining pattern using U266 cell line with the B-A38 monoclonal antibody no.