

## Product datasheet for **AM03021SU-N**

### **PLSCR1 Mouse Monoclonal Antibody [Clone ID: 13A6 [TEC-23]]**

#### **Product data:**

Product Type:	Primary Antibodies
Clone Name:	13A6 [TEC-23]
Applications:	IF, IP
Recommended Dilution:	<b>Immunoprecipitation.</b> <b>Western Blotting:</b> 1 µg/ml. <b>Flow Cytometry.</b> <b>Immunocytochemistry.</b>
Reactivity:	Rat
Host:	Mouse
Isotype:	IgG2a
Clonality:	Monoclonal
Immunogen:	BALB/c mice were immunized with pooled lipid rafts isolated from RBL-2H3 cells. Hybridoma cells were obtained after fusion of SP02 mouse myeloma cells with spleen cells of immunized mice using standard procedures.
Specificity:	This antibody binds to rat Phospholipid Scramblase 1 (PLSCR1), an 37-49 kDa membrane-associated protein accelerating bidirectional movement of plasma membrane phospholipids during conditions of elevated calcium.
Formulation:	State: Ascites State: Liquid Undiluted Ascites Preservative: 15 mM Sodium Azide
Conjugation:	Unconjugated
Storage:	Store undiluted at 2-8°C. <b>DO NOT FREEZE!</b>
Stability:	Shelf life: one year from despatch.



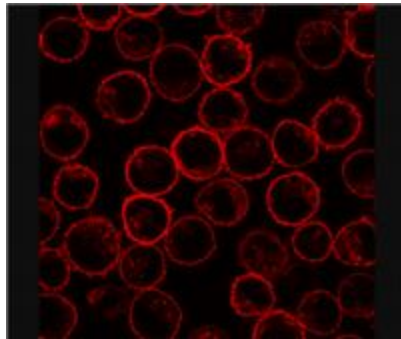
[View online »](#)

**Background:** PLSCR1 (Phospholipid Scramblase 1) is a multiply palmitoylated endofacial plasma membrane protein containing several SH3 and WW domain binding motives. In the plasma membrane, PLSCR1 plays a role in transbilayer lipid redistributions and signal transduction. Nonpalmitoylated PLSCR1, however, is able to be transported into the nucleus and bind DNA. PLSCR1 potentiates the antiviral activity of interferon and its expression is highly induced by interferons and growth factors.

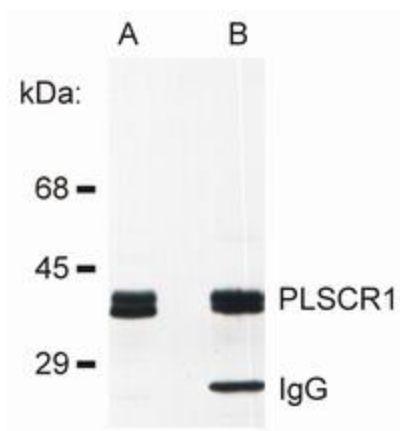
**Synonyms:** Phospholipid Scramblase 1

**Note:** Protocol: **Western Blot:**  
**Positive control:** RBL Rat basophilic leukemia cell line.  
**Sample preparation:** Resuspend approx. 50 mil. cells in 1 ml cold Lysis buffer (1% Triton X-100 in 20 mM Tris/Cl, 100 mM NaCl, 2 mM EDTA, 2 mM Na3Vo4, 10 mM glycerolphosphate, pH 8.0, 1 mM PMSF, 10 µg/ml aprotinin). Incubate 20 min on ice. Centrifuge to remove cell debris. Mix lysate with non-reducing/reducing Laemmli SDS-PAGE sample buffer. Boil for 5 min.  
**Note:** Both reducing and non-reducing conditions.

### Product images:



Immunofluorescence staining of PLSCR1 in rat basophilic leukemia (RBL) cell line using 13A6 antibody.



Detection of PLSCR1 in rat basophilic leukemia (RBL) cell line lysate (A) and in PLSCR1 immunoprecipitate from RBL lysate (B). The antibody 13A6 was used both for immunoprecipitation and immunodetection.