

## Product datasheet for **AM03010PU-N**

### HLAE (HLA-E) Mouse Monoclonal Antibody [Clone ID: MEM-E/07]

#### Product data:

Product Type:	Primary Antibodies
Clone Name:	MEM-E/07
Applications:	FC, IHC, IP
Recommended Dilution:	Immunohistochemistry (paraffin sections): Recommended dilution: 10 µg/ml; positive tissue: spleen. Flow cytometry: Recommended dilution: 1-4 µg/ml
Reactivity:	Human
Host:	Mouse
Isotype:	IgG1
Clonality:	Monoclonal
Immunogen:	Bacterially expressed recombinant HLA-E refolded with beta2-microglobulin and peptide
Specificity:	The antibody MEM-E/07 recognized native surface-expressed HLA-E, but not denatured heavy chain of HLA-E. The published results revealed that the antibody cross-reacts with some classical MHC Class I molecules (MHC Class Ia): HLA-B7 (strongly), HLA-B8 (moderately), HLA-B27, -B44 (weakly).
Formulation:	Phosphate buffered saline (PBS) with 15 mM sodium azide, approx. pH 7.4 State: Aff - Purified State: Liquid Ig fraction
Concentration:	lot specific
Purification:	Protein A chromatography (> 95% by SDS-PAGE)
Conjugation:	Unconjugated
Storage:	Store the antibody at 2 - 8 °C up to one month or (in aliquots) at -20 °C for longer. Avoid repeated freezing and thawing.
Stability:	Shelf life: one year from despatch.
Gene Name:	major histocompatibility complex, class I, E
Database Link:	<a href="#">Entrez Gene 3133 Human P13747</a>

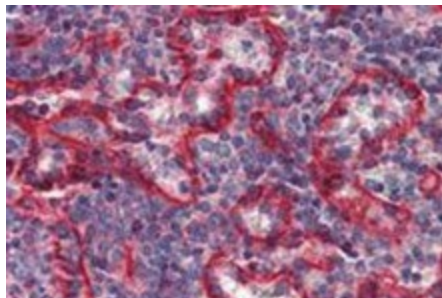


[View online »](#)

**Background:** HLA-E belongs to the MHC Class I molecules (MHC Class Ib; nonclassical) and it is expressed on many types of the human cells.

**Synonyms:** HLA-6.2, HLAE, MHC class I antigen E

**Product images:**



Immunohistochemistry staining of human spleen (paraffin sections) with anti-HLA-E (clone MEM-E/07).