

Product datasheet for **AM03010BT-N**

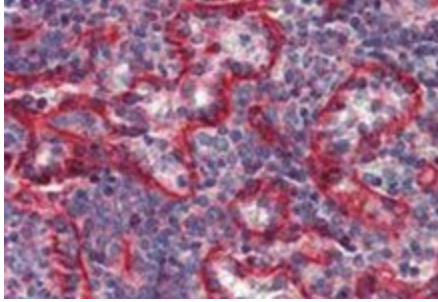
HLAE (HLA-E) Mouse Monoclonal Antibody [Clone ID: MEM-E/07]

Product data:

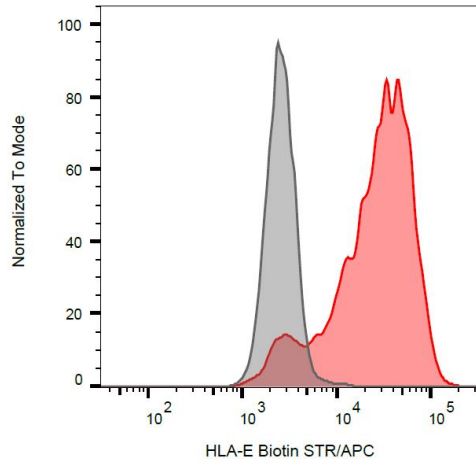
Product Type:	Primary Antibodies
Clone Name:	MEM-E/07
Applications:	FC, IHC
Recommended Dilution:	Flow cytometry: 2 µg/ml as starting dilution.
Reactivity:	Human
Host:	Mouse
Isotype:	IgG1
Clonality:	Monoclonal
Immunogen:	Bacterially expressed recombinant HLA-E refolded with beta2-microglobulin and peptide
Specificity:	<p>This antibody recognized native surface-expressed HLA-E, but not denatured heavy chain of HLA-E. HLA-E belongs to the MHC Class I molecules (MHC Class Ib; nonclassical) and it is expressed on many types of the human cells.</p> <p>The published results revealed that the antibody cross-reacts with some classical MHC Class I molecules (MHC Class Ia): HLA-B7 (strongly), HLA-B8 (moderately), HLA-B27, -B44 (weakly).</p>
Formulation:	<p>Phosphate buffered saline (PBS) with 15 mM sodium azide, approx. pH 7.4</p> <p>Label: Biotin</p> <p>State: Liquid purified Ig fraction</p> <p>Label: Conjugated with -LC-NHS under optimum conditions. The reagent is free of unconjugated biotin</p>
Concentration:	lot specific
Conjugation:	Biotin
Storage:	Store the antibody undiluted at 2 - 8 °C. DO NOT FREEZE!
Stability:	Shelf life: one year from despatch.
Gene Name:	major histocompatibility complex, class I, E
Database Link:	Entrez Gene 3133 Human P13747
Synonyms:	HLA-6.2, HLAE, MHC class I antigen E



[View online »](#)

Product images:

Immunohistochemistry staining of human spleen (paraffin sections) with anti-HLA-E (clone MEM-E/07).



Surface staining of HLA-E transfectants with anti-HLA-E (clone MEM-E/07) biotin, streptavidin-APC.