

Product datasheet for **AM03005FC-N**

HLA Class I ABC Mouse Monoclonal Antibody [Clone ID: W6/32]

Product data:

| | |
|-----------------------|---|
| Product Type: | Primary Antibodies |
| Clone Name: | W6/32 |
| Applications: | FC |
| Recommended Dilution: | Flow Cytometry (1/300 as starting dilution). |
| Reactivity: | Bovine, Feline, Human, Primate |
| Host: | Mouse |
| Isotype: | IgG2a |
| Clonality: | Monoclonal |
| Immunogen: | Membrane of Human tonsil cells |
| Specificity: | The antibody W6/32 recognizes virtually all nucleated human cells. It is a valuable reagent for analysing variations in HLA class I expression in different disease states e.g. liver disease, muscular dystrophy, inflammatory myopathy and other neuromuscular disorders. This antibody W6/32 is also suitable as a Positive Control for HLA tissue typing and crossmatching. |
| Formulation: | Phosphate buffered saline (PBS), pH~7.4 Label: FITC State: Liquid purified IgG fraction Preservative: 15 mM Sodium Azide Label: Conjugated with Fluorescein isothiocyanate (FITC) under optimum conditions. The reagent is free of unconjugated FITC. |
| Concentration: | lot specific |
| Conjugation: | FITC |
| Storage: | Store the antibody undiluted at 2-8°C. DO NOT FREEZE! This product is photosensitive and should be protected from light. |
| Stability: | Shelf life: one year from despatch. |



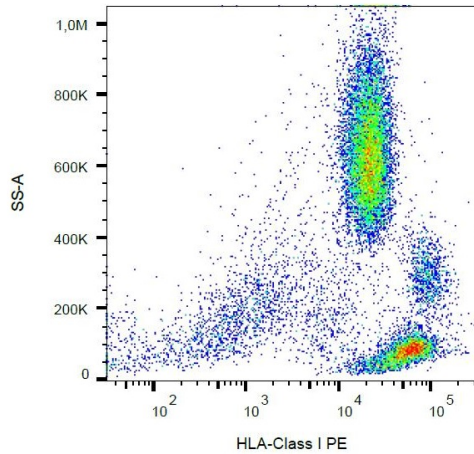
[View online »](#)

Background:

HLA-class I major histocompatibility (MHC) antigens are intrinsic membrane glycoproteins expressed on nucleated cells and noncovalently associated with an invariant beta-2 microglobulin. They carry foreign determinants important for immune recognition by cytotoxic T cells, thus important for anti-viral and anti-tumour defence. Human HLA-class I antigens are represented by HLA-A, HLA-B and HLA-C molecules. MHC Class I molecules (MHC Class Ia) are expressed on the surface of all human cell types.

Synonyms:

MHC class I ABC, HLA Class 2 ABC

Product images:

Surface staining of human peripheral blood cells with anti-HLA-class I (W6/32) PE.