

## Product datasheet for **AM02303PU-N**

### beta 2 Microglobulin (B2M) Mouse Monoclonal Antibody [Clone ID: D2E9]

#### Product data:

Product Type:	Primary Antibodies
Clone Name:	D2E9
Applications:	ELISA, FC, IF, WB
Recommended Dilution:	<b>ELISA:</b> In combination with HRP conjugated anti-B2MG mAb clone D3A2 (Cat.- No AM09266HR-N), clone D2E9 can be used as capturer in Sandwich ELISA for B2MG detection. <b>Western Blot:</b> 1 µg/ml dilution. Detect recombinant Human B2MG antigen (100 ng/lane). <b>Flow Cytometry.</b> <b>Immunofluorescence:</b> 1/50 (20 µg/ml) dilution.
Reactivity:	Human
Host:	Mouse
Isotype:	IgG1
Clonality:	Monoclonal
Immunogen:	Highly purified beta 2 microglobulin from Human urine.
Specificity:	This antibody reacts to Beta 2 Microglobulin.
Formulation:	0.01M PBS, pH 7.2 State: Aff - Purified State: Lyophilized purified IgG fraction
Reconstitution Method:	Restore with double distilled water to a final concentration to 1.0 mg/ml.
Concentration:	1.0 mg/ml (after reconstitution)
Purification:	Affinity Chromatography on Protein G
Conjugation:	Unconjugated
Storage:	Store lyophilized at 2-8°C for 6 months or at -20°C long term. After reconstitution store the antibody undiluted at 2-8°C for one month or (in aliquots) at -20°C long term. Avoid repeated freezing and thawing.
Stability:	Shelf life: one year from despatch.
Gene Name:	beta-2-microglobulin



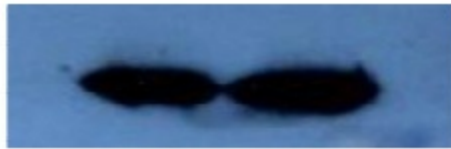
[View online »](#)

**Database Link:** [Entrez Gene 567 Human P61769](#)

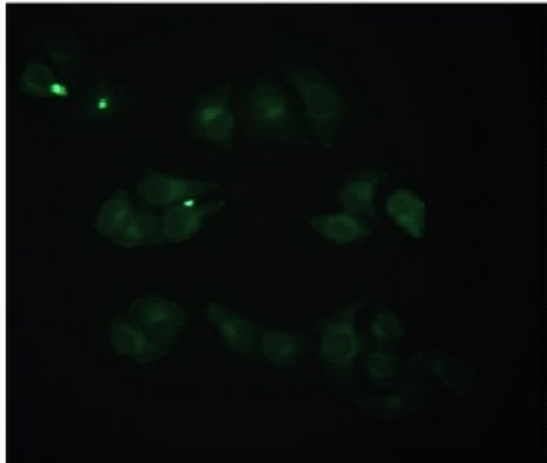
**Background:** Human beta 2 microglobulin (B2MG) is a component of major histocompatibility complex 1 (MHC1). It is abundant at the surface of lymphocytes and exists at the surface of all cell types except red cells and platelets. B2MG is normally filtered out of blood through glomeruli, but the process is impaired in patients with renal diseases. Elevated B2MG level is implicated with lymphoma, multiple myeloma, renal diseases, viral infections and auto-immune conditions.

**Synonyms:** B2M, Beta-2 microglobulin, Beta 2 microglobulin

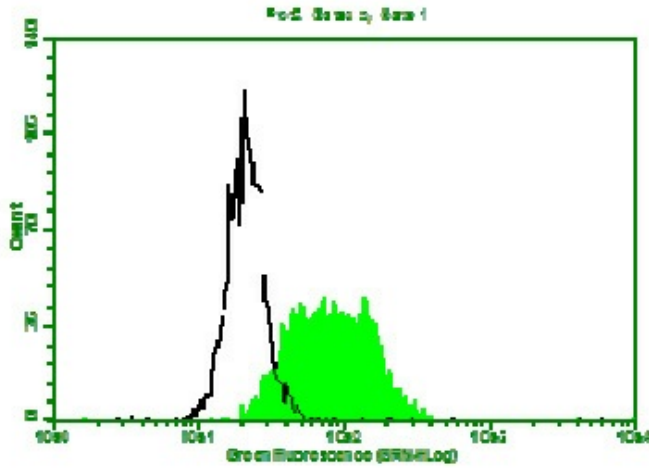
**Product images:**



Detect recombinant human B2MG antigen (100ng/lane) using anti-human B2MG mAb clone D2E9 at 1ug/ml dilution.



Staining of methanol-fixed HeLa cells by Immunocytochemistry using Mouse anti-Human beta 2 Microglobulin monoclonal antibody (D2E9) at 1/50 (20 ug/ml).



Fluorescence Flow Cytometry: HeLa cells strained with Mouse anti-B2MG mAb clone D2E9 and fluorescence labelled secondary antibody. Black line histogram represents HeLa cells stained with isotype control, Mouse anti-TB 38Kd antigen mAb ([AM09229PU-N], B12F8) and fluorescence labelled secondary antibody.