

Product datasheet for **AM02302PU-N**

beta 2 Microglobulin (B2M) Mouse Monoclonal Antibody [Clone ID: D6E4]

Product data:

Product Type:	Primary Antibodies
Clone Name:	D6E4
Applications:	ELISA, IF
Recommended Dilution:	ELISA. Immunofluorescence.
Reactivity:	Human
Host:	Mouse
Isotype:	IgG1
Clonality:	Monoclonal
Immunogen:	Recombinant human beta 2 microglobulin.
Specificity:	This antibody recognizes beta 2 microglobulin (B2MG).
Formulation:	0.01M PBS, pH 7.2 State: Aff - Purified State: Lyophilized purified IgG fraction
Reconstitution Method:	Restore with double distilled water to a final concentration to 1.0 mg/ml.
Purification:	Affinity Chromatography on Protein G
Conjugation:	Unconjugated
Storage:	Store lyophilized at 2-8°C for 6 months or at -20°C long term. After reconstitution store the antibody undiluted at 2-8°C for one month or (in aliquots) at -20°C long term. Avoid repeated freezing and thawing.
Stability:	Shelf life: one year from despatch.
Gene Name:	beta-2-microglobulin
Database Link:	Entrez Gene 567 Human P61769



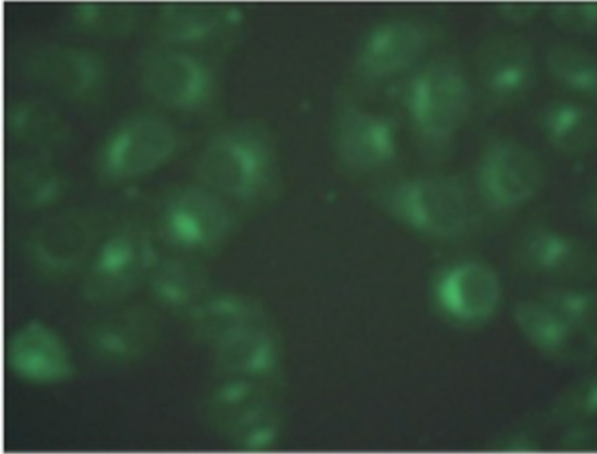
[View online »](#)

Background:

Human beta 2 microglobulin (B2MG) is a component of major histocompatibility complex 1 (MHC1). It is abundant at the surface of lymphocytes and exists at the surface of all cell types except red cells and platelets. B2MG is normally filtered out of blood through glomeruli, but the process is impaired in patients with renal diseases. Elevated B2MG level is implicated with lymphoma, multiple myeloma, renal diseases, viral infections and auto-immune conditions.

Synonyms:

B2M, Beta-2 microglobulin, Beta 2 microglobulin

Product images:

Methanol-fixed HeLa cells stained with 20 ug/ml mouse anti-B2MG mAb clone D6E4 and fluorescence labelled secondary antibody.