

Product datasheet for **AM02032PU-S**

Helicobacter pylori Mouse Monoclonal Antibody [Clone ID: 3/15/45/2]

Product data:

Product Type:	Primary Antibodies
Clone Name:	3/15/45/2
Applications:	ELISA, IHC
Recommended Dilution:	ELISA. Immunohistochemistry Paraffin Sections: 1/100.
Reactivity:	Helicobacter pylori
Host:	Mouse
Clonality:	Monoclonal
Immunogen:	Helicobacter pylori (H. pylori).
Specificity:	This antibody detects Helicobacter pylori.
Formulation:	50 mM TRIS pH 7,4 State: Purified State: Lyophilized purified Cell culture supernatant
Reconstitution Method:	Restore in aqua bidest to 1 mg/ml.
Purification:	Protein G Chromatography
Conjugation:	Unconjugated
Storage:	Store lyophilized at 2-8°C and reconstituted at -20°C. Avoid repeated freezing and thawing.
Stability:	Shelf life: One year from despatch.



[View online »](#)

Background:

The spiral shaped bacterium *Helicobacter pylori* is strongly associated with inflammation of the stomach and is also implicated in the development of gastric malignancy. *H. pylori* is known to cause peptic ulcers and chronic gastritis in human. It is associated with duodenal ulcers and may be involved in development of adenocarcinoma and low-grade lymphoma of mucosa associated lymphoid tissue in the stomach. More recently this bacterium has also been implicated with a number of vascular disorders including heart disease. It is not clear how *H. pylori* is transmitted or why some patients become symptomatic while others do not. The bacteria are most likely spread from person to person through fecal-to-oral or oral-to-oral routes. Possible environmental reservoirs include contaminated water sources. Serological tests that measure specific *H. pylori* IgG antibodies can determine if a person has been infected although these methods do have drawbacks and limitations.

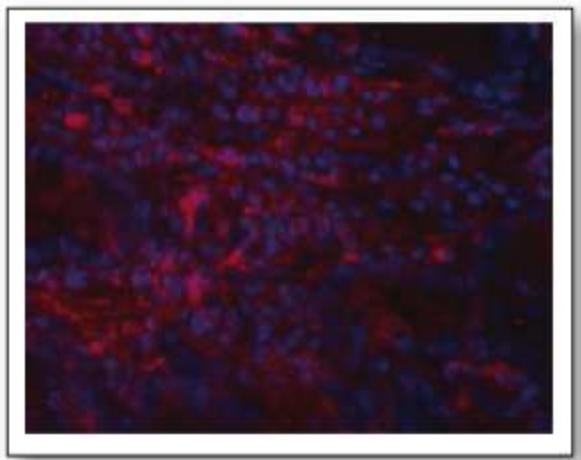
Synonyms:

H. pylori

Note:

LocusID 3381

Product images:



Immunofluorescence staining of *H. pylori* in Paraffin Section of gastric biopsy sample. The Section was incubated with *H. pylori* antibody Cat.-No AM02032PU followed by an appropriate secondary antibody coupled to Cy3. The nuclei were visualized with DAPI. O